

Nikon View

Nikon View
Windows
User's Manual

The Nikon logo is displayed in a bold, italicized, black sans-serif font. It is positioned on a blue, trapezoidal background that tapers to the right, creating a dynamic, slanted effect. The logo is centered horizontally within this blue shape.

Nikon

NIKON CORPORATION

Electronic Imaging Division
4-25, Nishi-Ohi 1-chome,
Shinagawa-ku, Tokyo 140, Japan

6ME 41300
Printed in Korea (9705)

Nikon

**COOLPIX 300 Companion Software
and TWAIN Driver**

Nikon View

for Windows

User's Manual

Cautions

- The reproduction of all or part of this manual without our permission is prohibited.
- The information contained in this manual is subject to change without notice.
- We have made every effort to produce a perfect manual, but should you find any mistakes, we would be grateful if you would kindly let us know.
- We shall take no responsibility for consequences resulting from the operation of this product, despite the terms mentioned above.



Warning!

The CD-ROM on which this software is distributed should not be played back on audio CD equipment. Playing CD-ROMs on an audio CD player could cause hearing loss or damage the equipment.

Trademark Information

IBM and IBM PC/AT are registered trademarks of International Business Machines Corporation.

Windows and MS-Windows are trademarks of Microsoft corporation.

Microsoft Video for Windows is a product of Microsoft corporation.

All other brand or product names mentioned in this manual are the trademarks or registered trademarks of their respective holders.

Notice concerning prohibition of copying or reproduction

Note that simply being in possession of material which has been copied or reproduced by means of a digital camera may be punishable by law.

Items prohibited by law from being copied or reproduced

Do not copy or reproduce paper money, coins, securities, government bonds, or local government bonds, even if such copies or reproductions are stamped “Sample”.

The copying or reproduction of paper money, coins, or securities which are circulated in a foreign country is prohibited.

The copying or reproduction of unused postage stamps or post cards issued by the government without obtaining approval from the government is prohibited.

The copying or reproduction of stamps issued by the government and certified documents stipulated by law is prohibited.

Cautions on certain copies and reproductions

The government has issued cautions on copies or reproductions of securities issued by private companies (shares, bills, checks, gift certificates, etc.), commuter passes, or coupon tickets, except when a minimum of necessary copies are to be provided for business use by a company. Also, do not copy or reproduce passports issued by the government, licenses issued by public agencies and private groups, ID cards, and tickets, such as passes and meal coupons.

Comply with copyright notices

The copying or reproduction of works such as books, music, paintings, woodcut prints, maps, drawings, movies, and photographs which are copyrighted creative works is prohibited except when it is done for personal use at home or for similar restricted and non-commercial use.

Contents

Overview	1
Before You Begin	3
System Requirements	3
Installation	4
Getting Started	15
First Steps	15
A Closer Look at Nikon View	22
The Main Window	24
Document Windows	38
The Browser Window	42
Using the Browser	47
Preferences	48
Opening the Browser Window	57
Previewing Documents	61
Taking Photographs	66
Transferring Documents to Another Application	69
Saving Documents to Disk	70
Deleting Documents	73
Working with Documents	75
Acquiring Documents from the Camera	75
Zoom	76
Scrolling and Resizing the Document Window	77
Rotating Images	79
Flipping Images	81
Printing Images	83

Playing Back Sound Recordings	90
Getting Information about a Document	92
Saving Documents	94
Reading Documents from Disk	98
The About Window	100
Appendix A: Nikon View for Windows 3.1	101
Installation	101
Index	106

Overview

Welcome to *Nikon View for Windows*, a companion program for the COOLPIX 300. *Nikon View* offers a combination of browser, simple editing, and file-transfer capabilities. Using these three functions, you can play back images and audio data from your camera's memory, edit them in *Nikon View*'s document window, and save them to your computer for use in other applications or for long-term storage. Once you have installed *Nikon View* and mastered its simple tool buttons and menus, you'll be able to distribute your digital photographs by disk or electronic mail, or include them in your home page and other documents you create for business or personal use.

Nikon View's features include:

- a browser function which allows you to preview at a glance all the images and recordings stored in your camera's memory, and to select items for editing, transfer to disk, or deletion
- compliance with the TWAIN standard, making it possible to launch the browser from any application, such as Adobe Photoshop, which supports TWAIN-compatible acquire plug-ins
- rapid transfer of photographs, memos, and audio data to your computer with a few mouse clicks
- playback of audio data using either the camera's built-in speaker or your computer's audio system
- simple editing of image data using *Nikon View*'s one-touch tool palettes and menus
- support of TIFF, JPEG and BMP image formats, giving you added flexibility when using images created with your COOLPIX 300 in other applications or when distributing photographs by diskette or electronic mail
- support of the WAV audio format, allowing you to play back sound recordings using standard Windows software

This manual will guide you, step-by-step, through the process of setting up and using *Nikon View* with your COOLPIX 300. The next section, “*Before You Begin*,” gives details of how to install *Nikon View* on your computer. It is followed by “*Getting Started*,” which introduces you to the basics of using *Nikon View* to preview the contents of your camera’s memory, select items for editing or playback, and save images and recordings to disk. Refer to “*Using the Browser*” and “*Working with Documents*” for detailed information on using *Nikon View*’s browsing and editing functions.

Note for users of Windows 3.1: *The menus and dialog boxes included in this manual are those which appear in the Windows 95 version of Nikon View. Differences between the Windows 3.1 and Windows 95 versions are noted in Appendix A.*

Before You Begin

This section gives the system requirements for *Nikon View for Windows* and guides you through the process of installing *Nikon View* to your computer's hard disk.

Note: *This manual assumes a basic understanding of common Windows operations. If you are in doubt about the meaning of terms used here, refer to your Windows' manual.*

System Requirements

Nikon View for Windows is a 32-bit application. To run *Nikon View for Windows*, you will need system hardware and software which meet the following minimum requirements:

- an IBM PC/AT or compatible computer with a i386 or later CPU
- either Windows 95, or Windows 3.1 or later
- at least 8 MBs of free RAM (12 MBs or more is recommended)
- 2.5 MBs of free space on your hard-disk for installation (of which at least 1.5 MBs of which must be available in the Windows directory), with another 20 MBs of free hard disk space available for temporary storage while *Nikon View* is running
- a monitor with a resolution of 640 × 480 dots or higher and a video system which supports 24-bit True Color (16.7 million colors)
- a CD-ROM drive for installation
- a serial port or SCSI adaptor for connection to the COOLPIX 300 (note that to connect the COOLPIX 300 to a SCSI adaptor you will require the optional COOLPIX 300 SCSI Kit)

Installation

The installation disk provided with this product contains the *Nikon View* browser software and drivers which handle the exchange of information between your computer and the COOLPIX 300. Before starting the installation program, check to be sure that no other applications are running and that you have enough space on your hard disk to install and run the program (a minimum of 22.5 MBs of free disk space is required, of which 1.5 MBs must be available in the Windows directory; more space will be needed should you choose to install the applications bundled with *Nikon View*). Do not connect the camera to the computer at this time.

Note: *The installation process for Windows 3.1 differs slightly from that described below. See Appendix A.*

Step 1 — Insert the *Nikon View* disk in the CD-ROM drive

When the *Nikon View* CD-ROM is inserted in the CD-ROM drive, the following window will appear on the desktop.



Note: *In addition to Slides and Sounds Plus and PhotoEnhancer, the US version of the Nikon View installer CD-ROM includes Imagine.... For more information on these software packages, refer to the README file.*

Step 2 — View the README file

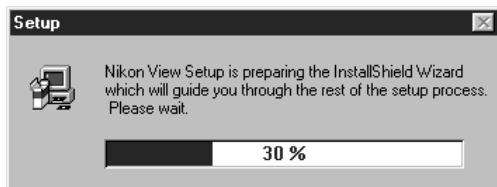
It is recommended that you take a few moments to view the README file, which contains important information about the software provided with your camera. Click **Read Me** to open the README file in the *Notepad* application, where the contents of the file can be viewed or printed. When you have finished, select **Exit** from the *Notepad* **F**ile menu to return to the Nikon View Setup window.

Step 3 — Install *Nikon View*

To install *Nikon View*, click the **Install Nikon View** button (for information on installing other the software provided with this product, refer to the documentation included with this manual). The window shown on the previous page will be replaced a dialog offering a choice of language for *Nikon View*'s menus and dialogs.



Select a language by clicking the appropriate button (please note that the menus and dialogs shown in this manual are for the English version). A progress indicator will be displayed while the setup program loads.



Once this initialization process is complete, the following Welcome window will be displayed.



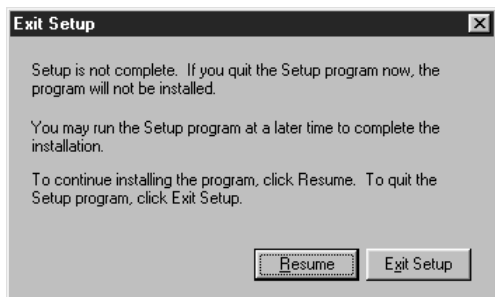
The buttons available in the Welcome window are explained below.

Next

Opens the Nikon Install dialog box shown in Step 2, allowing you to complete the installation process.

Cancel

Selecting **Cancel** brings up the dialog box shown below. Choose **Exit Setup** to quit without installing *Nikon View*, or **Resume** to continue installation. Should you choose to exit the installation program, you will still be able to complete installation at any time by repeating the process from Step 1.



Step 4 — Select a destination directory for *Nikon View*

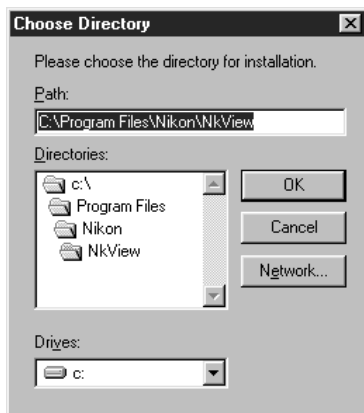
Clicking **Next** in the Welcome window brings up the Choose Destination Location dialog box.



The items in this dialog box are explained below.

Browse

Clicking **Browse** brings up the dialog box shown at right. You can type a destination directory for *Nikon View* in the **Path** text box, or you can click on the folders shown under **Directories** to navigate to an existing directory on the current drive. Clicking on the arrow next to **Drives** allows you to select a another drive from a pop-up menu. Click **OK** when you have chosen a destination directory, or **Cancel** to accept the default directory displayed in the Choose Destination Location dialog box.



Next

Installs *Nikon View* to the selected directory. If the specified directory does not already exist, it will be created automatically.

Back

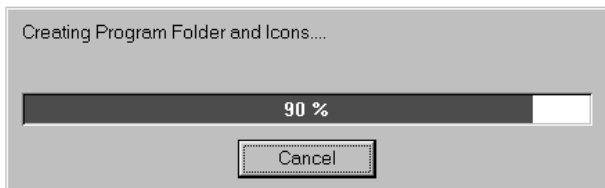
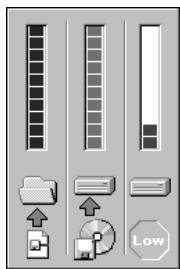
Returns you to the Welcome window shown in Step 1.

Cancel

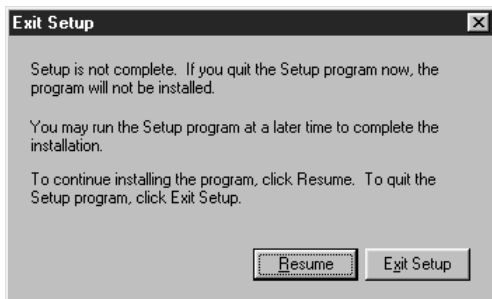
Selecting this item brings up the dialog box shown under **Cancel** in the previous step, allowing you to exit the setup program without installing *Nikon View*. You can run the setup program again at any time to complete installation.

Step 5 — Complete installation

Clicking **Next** in the Install dialog box causes *Nikon View* to be installed in the specified directory. The following progress indicators will be displayed while *Nikon View*'s program files and drivers are being written to your hard disk.

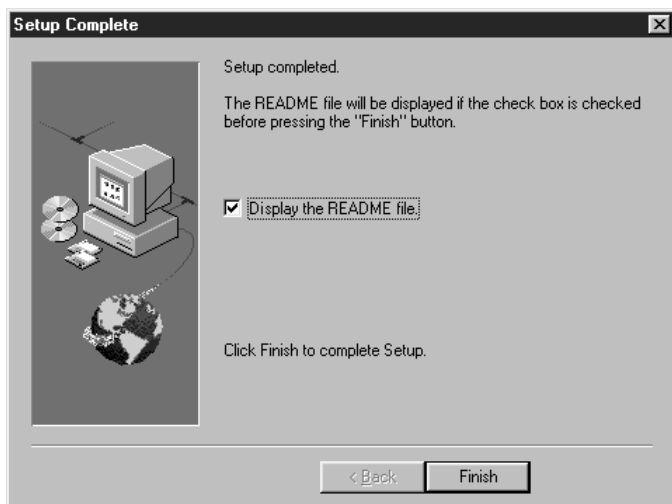


Clicking **Cancel** interrupts the installation and brings up the dialog box shown below.



Click **Resume** to continue the installation process from the point it was interrupted. Click **Exit Setup** to cancel the installation and return to Windows without adding *Nikon View* to your system. You can begin the installation process again at any time by inserting the *Nikon View* CD-ROM into the CD-ROM drive.

Once the installer has finished copying *Nikon View* to the destination directory, the following dialog will be displayed.



Check “Display the README file” to view the contents of the README file when installation ends (recommended).

Note: *The README file may contain important information about Nikon View which could not be included in this manual.*

Click **Finish** to exit the setup program. If “Display the README file” is checked, the README file will be opened in the *Notepad* accessory. When you have finished viewing the README file, choose **Exit** from the **File** menu to close the *Notepad* accessory. The README file can be viewed again at any time by opening the copy of the README file located in the directory you chose as the destination for *Nikon View*.

Step 6 — Install additional software

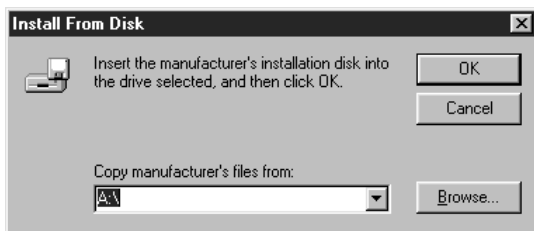
When you exit the *Nikon View* installer, the Nikon View Setup window shown in Step 1 will be displayed. Click the appropriate buttons to install additional software, or click **EXIT** to end the installation process and return to Windows. You can run the installer at a later date to install additional software by placing the CD-ROM in the drive.

Step 7 — Register the COOLPIX 300 (SCSI connection only)

If you have purchased the optional COOLPIX 300 SCSI Kit and have a SCSI adaptor installed in your computer, you can now register the camera in the Windows 95 Device Manager. Exit Windows and turn off your computer, then connect the COOLPIX 300 to your computer's SCSI chain as described in the *COOLPIX 300 User's Manual*. Turn on the camera and then turn on your computer and start Windows. The following message will appear on the desktop.

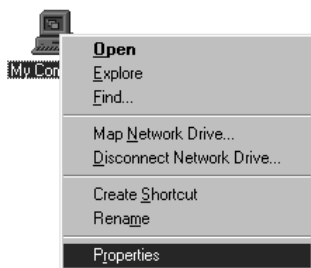


Select **Driver from disk provided by hardware manufacturer** and click **OK**. The Install from Disk dialog will appear.

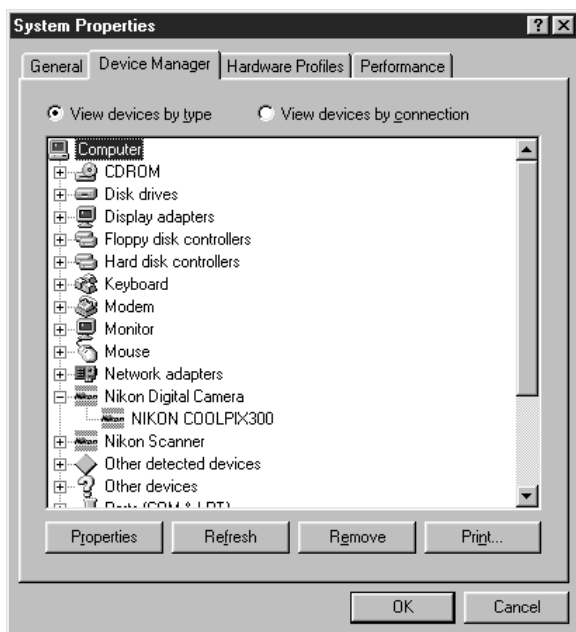


After inserting the installation CD into the CD-ROM drive, enter the drive letter for the CD-ROM drive in the “**Copy manufacturer's files from:**” text box and click **OK**. A progress indicator will be briefly displayed while Windows adds the camera to your system.

Once Windows has registered your COOLPIX 300, you can check that the camera has been added to your system by clicking the My Computer icon with the right mouse button and selecting **Properties** from the menu that appears.



This will open the System Properties window. Select the Device Manager tab and confirm that the COOLPIX 300 is shown in the list of devices under “Nikon Digital Camera.”



Getting Started

Once you have installed the Nikon View software as described in “*Before You Begin*,” you are ready to use your computer to view the contents of your COOLPIX 300’s memory or to transfer images and recordings to your computer for editing and storage. This chapter provides a brief introduction to *Nikon View*’s windows, menus, and buttons, and outlines the steps you will take when using the program with your COOLPIX 300. More detailed information may be found in the following chapters, “*Using the Browser*” and “*The Document Window*.”

First Steps

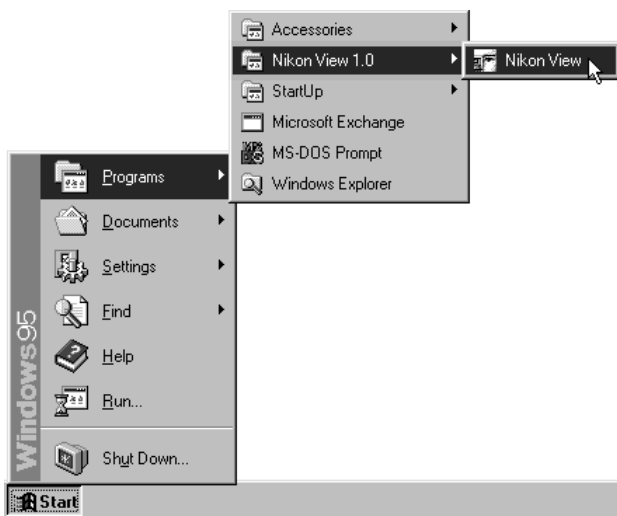
This section guides you step-by-step through the basics of using *Nikon View* to acquire documents from your camera, modify them, and save them to disk. An overview of the program’s menus and tool palettes may be found in the following section, “*A Closer Look at Nikon View*.” More detailed information on using *Nikon View* either independently or with the camera can be found in the following chapters, “*Using the Browser*” and “*Working with Documents*.”

Step 1 — Connect the COOLPIX 300 to Your Computer

After making sure that both your camera and computer are off, connect the devices as described in your *COOLPIX 300 User’s Manual*. Turn the camera and any other peripheral devices on, then turn on your computer and start Windows.

Step 2 — Start *Nikon View*

Start *Nikon View* by double-clicking the program's icon or by choosing the program from the **Start** menu (users of Windows 3.1 can start *Nikon View* by opening the *Nikon Software* program group and double-clicking the *Nikon View* icon).



Select **Nikon View** from the **Start** menu...



...or double-click the **Nikon View** icon.

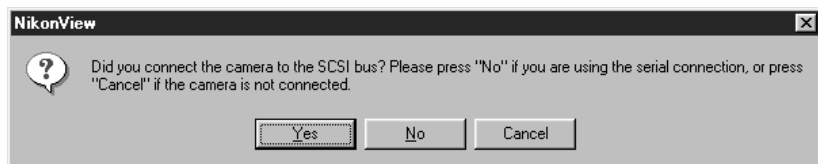
The program's **main window** and **tool palette** will appear on the desktop.



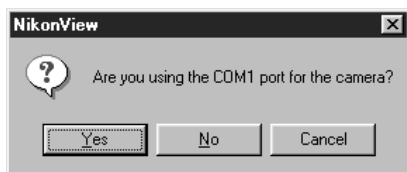
Tool palette

Main window

The first time you start *Nikon View* after installing the program or changing the port used to connect your camera to the computer, the following message will be displayed.



If you have connected your camera to the computer's SCSI chain, click **Yes** and proceed to Step 3. Clicking **No** will reveal the message shown below.



If you have connected your camera to COM port 1 (which on most computers corresponds to the computer's main serial port), or if you are not sure to which serial port your camera is connected, click **Yes**. If you have connected your camera to a different COM port, click **No**. If you click **No** or if the computer does not find the camera on COM port 1, you will be asked whether the camera is connected to COM port 2. This procedure will be repeated until the COM port to which the camera is connected is found.

Note: *Depending on your computer, the serial ports may be identified as "SERIAL1, SERIAL2..." rather than "COM1, COM2..." The difference is one of name only; even if the port to which your camera is connected is SERIAL1, you should choose COM1 when so prompted by the computer.*

Step 3 — Acquire Documents from the Browser

Once *Nikon View* has located the camera, the program's **browser window** will appear within the main window.



You can select a single **document** (image or recording) from the browser by clicking its name, or select multiple documents with **Ctrl** click. When you have chosen the documents you want, press the Acquire button in the browser window tool palette.



The selected documents will be opened in *Nikon View*'s main window, where they can be flipped or rotated using the buttons on the main window tool palette or document window tool bar. You can also zoom in on an image by clicking it or zoom the image out by clicking it while holding the **Ctrl** key down on the keyboard (when the mouse pointer is over an image, the cursor will change to the shape of a magnifying glass).

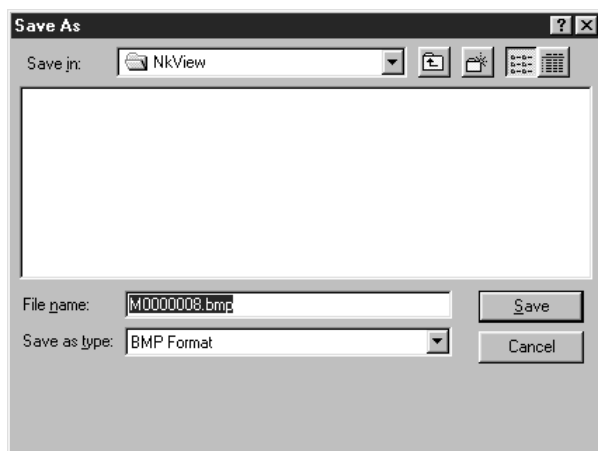
Step 4 — Save the Documents to Disk

When you have finished playing back and editing the documents, save them to disk by clicking the Save button on the main window tool bar or by selecting **Save** from the **File** menu.



Save

The following dialog will appear.



After specifying the file type, name, drive, and directory for the recording, click **Save**. The image will be saved in the specified location.

Step 5 — Quit *Nikon View*

To exit *Nikon View* and return to Windows, select **Exit** from the **File** menu or click the Exit button in the main window tool palette.



A Closer Look at *Nikon View*

This section introduces you to *Nikon View*'s main windows and briefly describes the program's menus and buttons. *Nikon View*'s functions are shared between three types of window: the **browser window**, which acts as an interface between the COOLPIX 300 and your computer; **document windows**, where images and sounds acquired from your camera can be viewed and edited; and the **main window**, which gives you access to the browser and document windows. When *Nikon View* is the active application, most of the operations that can be performed on acquired images are available from the main window's menus and tool bar. In addition, buttons on the **tool palette** allow you to perform such tasks as opening the browser window and rotating and flipping selected images, even when the browser is being controlled from an application other than *Nikon View*. The commands available in the main, document, and browser windows are outlined in turn below.



The Main Window

The main window may be thought of as *Nikon View*'s control center, where documents (images and sounds) can be acquired from the COOLPIX 300, played back, modified, or saved to disk. When the browser window is closed and no document windows are open, only the **File** and **View** menus are available and most of the tool buttons will be dimmed and inactive. When the browser or a document is open in the main window, the **Edit**, **Tool**, and **Window** menus will be displayed.



The main window's menus and buttons are outlined below. A more detailed explanation of the commands available may be found in the following chapters, "*Working with Documents*" and "*Using the Browser.*"

The Main Window Control Menu

The control menu can be accessed by clicking the Nikon View icon () at the top left corner of the main window (the document and browser windows have their own control menus, which are described elsewhere).



The control menu contains the items listed below.

Restore

Restores the window to its original size after it has been enlarged using the **Maximize** command.

Move

Allows you to use the arrow keys or mouse to change the position of the main window. When you have moved the window to the desired position, click the right mouse button or press **Enter**.

Size

Allows you to use the arrow keys or mouse to change the size of the main window.

Minimize

Reduces the main window to a button on the taskbar.

Maximize

Enlarges the main window to fill the screen.

Close

Closes the main window, ending your current session of *Nikon View*.

The File Menu

The items available in the **File** menu differ depending on whether the browser or document windows are currently open or not. When no windows are open, the shorter menu at left is displayed; when the browser is open or when a document has been loaded from disk or acquired from the camera, the items listed on the menu at right are available.



The commands that can be accessed from the **File** menu are listed below.

Open...

Allows you to specify the name of an image or sound file that has previously been saved to disk and to then open it in a new document window. This command can also be accessed by clicking the Open button in the tool bar (see below).

Close

Closes the currently active document window.

Save

Saves the currently active document to disk. This command can also be accessed by clicking the Save button in the tool bar.

Save As...

Allows you to save the currently active document to disk under any name you specify.

Print...

Allows you to print the currently active document to a printer you specify. This command can also be accessed by clicking the Print button in the tool bar.

Print Preview

Allows you to determine how the currently active document will appear when printed using the present printer settings.

Print Setup...

Brings up a dialog box which allows you to select a printer and make changes to the current printer settings.

Preferences...

Brings up the Preferences dialog box, allowing you to specify a scratch disk for temporary storage of documents acquired from the camera, or to change the settings for the camera and browser. The Preferences dialog can also be accessed by clicking the Preferences button in the tool palette (see below).

About NikonView

Brings up the About window.

Recent Files

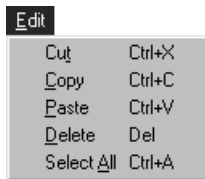
The **File** menu lists the four most recently accessed documents in this section. If several document windows are currently open, you can use this list to switch between documents. If the listed file is not currently open, selecting it will open it in a new document window.

Exit

Closes the main window, terminating your current session of *Nikon View*. You can also quit the program by clicking the Exit button in the tool palette.

The Edit Menu

The **E**dit menu is only visible when the browser or document windows are open.

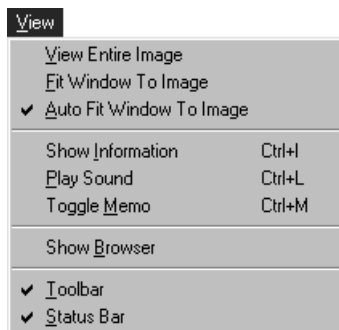


The **C**ut, **C**opy, **P**aste, and **D**elete commands are available when you have opened a dialog containing a text box, such as the Save As or Scratch Disk dialogs. The command shortcuts listed in the menu allow you to copy (**Ctrl+C**) or cut (**Ctrl+X**) selected text from one dialog and paste (**Ctrl+V**) it in another, or to delete selected text by pressing the **Del** key. You can not use these commands to copy image or audio data between documents.

The **S**elect **A**ll command is available when the browser window is open and can be used to select all the documents in the camera's memory for deletion, editing, or acquisition. You can also use the **D**elete command when in the browser to delete selected items from the camera's memory (see "*Deleting Documents*" in the chapter "*Using the Browser*," below).

The View Menu

The items available in the **View** menu differ depending on whether or not a the browser or document windows are currently open. When no windows are open, the shorter of the two windows shown below is displayed; when browser or document windows are open in the main window, the menu contains the items shown at right.



The commands available in the **View** menu are described below.

View Entire Image

This command is available when the current document window contains an image which too large to be displayed fully. The document window is enlarged to show the entire image; if the image is too large to fit in the main window, it will be shown at the highest zoom ratio at which it can be displayed in its entirety.

Fit Window to Image

Adjusts the size of the active document window to match the dimensions of the image it contains. If the image is too large to fit in the main window, the document window will be expanded to the largest size that can still be contained in the main window. This command can also be accessed by clicking the Fit Window to Image button in the toolbar.

Auto Fit Window to Image

When this item is checked, the document window will automatically be adjusted to match any changes in the dimensions of the image it contains. When the image is rotated or zoomed in or out, the dimensions of the document window will change to show as much of the image as will fit in the main window.

Show Information

Brings up the Information dialog box, which gives the size, location, and date of recording of the active document (or of the most recently selected document in the browser if the browser window is active). This command can also be accessed by clicking the Show Information button in the document or browser preview windows.

Play Sound

If the document in the active document window (or, if the browser window is active, the most recently selected document in the browser) contains a sound recording, choosing this item will bring up the Play Sound dialog, allowing you to play the recording back or to save it to disk. This command can also be accessed by clicking the Play Sound button in the document or browser preview windows.

Toggle Memo

This command is available when an item containing a memo has been selected in the browser window. Using this option, you can control whether or not the memo will be displayed in the browser preview window or acquired when the item is transferred from the browser to another application. This command can also be accessed using the Toggle Memo buttons in the browser's preview window.

Show Browser

Brings up the browser window (see "*The Browser Window*," below). The browser window can also be opened by clicking the camera icon in the main window tool palette.

Toolbar

If there is a check-mark next to this item, the main window tool bar will be displayed.

Status Bar

If this item is checked, a status bar will be displayed at the bottom of the main window (see "*The Status Bar*," below).

The Tools Menu

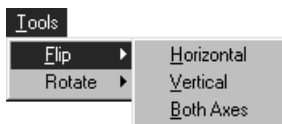
The **T**ools menu is only available when browser or document windows are open.



The items in the **T**ools menu are explained below.

Flip

This item gives access to the following submenu.



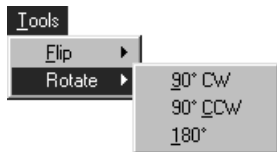
Horizontal: If the browser window is active, choosing this item will flip all selected images in the browser horizontally. If a document window is active when this item is selected, any images it contains will be flipped. This command can also be accessed by clicking the Flip Horizontal buttons on the main window tool palette or the document window tool bar.

Vertical: Flips images in the browser or active document window vertically. This command can also be accessed by clicking the Flip Vertical buttons on the main window tool palette or document window tool bar.

Both Axes: Flips images in the browser or active document window both horizontally and vertically.

Rotate

This item gives access to the following submenu.



90° CW: Rotates images in the browser or active document window ninety degrees clockwise. This command can also be accessed by clicking the Rotate 90° Clockwise buttons on the main window tool palette or document window tool bar.

90° CCW: Rotates images in the browser or active document window ninety degrees counter-clockwise. This command can also be accessed by clicking the Rotate 90° Counterclockwise buttons on the main window tool palette or document window tool bar.

180°: Rotates images in the browser or active document window 180°.

The Window Menu

The **Window** menu is only displayed browser or document windows are open.



The following items are available in the **Window** menu.

Cascade

When several documents are open at the same time, choosing this command arranges them in overlapping windows of equal size.

Tile

Arranges documents in non-overlapping windows of equal size that together fill the main window.

Close All

Closes the browser and all open document windows.

Arrange Icons

Returns all iconized document windows to their original positions at the bottom of the main window.

Open Windows

The names of all windows currently open in *Nikon View*'s main window are displayed at the end of the **Window** menu. The active window is indicated by a check mark; another window can be activated and brought to the front by selecting it from this list.

The Main Tool Palette

When *Nikon View* is running or the browser is being used from another application, the following tool palette will appear on the desktop.



The tool palette can be moved anywhere on the desktop by dragging it by its title bar. When you next start *Nikon View* or select the browser from the acquire menu of another application, the palette will reappear in the position you left it when you last quit the program.

The function of each button is described briefly below. You can also learn the function of a button by resting the mouse pointer on the button for a few seconds. A label will pop up listing its function.



Show Browser

Clicking this button brings up the browser window. The browser window can also be opened by choosing **Show Browser** from the **View** menu.



Flip Horizontal

When the browser window is active, clicking this button flips all selected images in the browser horizontally. If the active window is a document window, any images (photographs or memos) it contains will be flipped. This command can also be accessed by clicking the Flip Horizontal button in the document window or by choosing **Horizontal** from the **Flip** submenu of the **Tools** menu.



Flip Vertical

Flips the image in the browser or active document window vertically. This command can also be accessed by clicking the Flip Vertical button in the document window or by choosing **V**ertical from the **F**lip submenu of the **T**ools menu.



Rotate 90° Counterclockwise

Rotates the image in the browser or active document window 90° to the left. This command can also be accessed by clicking the Rotate 90° Counterclockwise button in the document window or by choosing **90° C**CW from the **R**otate submenu of the **T**ools menu.



Rotate 90° Clockwise

Rotates the image in the browser or active document window 90° to the right. This command can also be accessed by clicking the Rotate 90° Clockwise button in the document window or by choosing **90° C**W from the **R**otate submenu of the **T**ools menu.



Exit

Terminates your current session of *Nikon View*. This command can also be accessed by choosing **E**xit from the **F**ile menu.



Preferences

Brings up the preferences dialog box, allowing you to change the settings for the camera and browser. This command can also be accessed by choosing **P**references... from the **F**ile menu.

The Main Window Tool Bar

The main window tool bar is visible when the **T**oolbar item in the **V**iew menu is checked.



The function of each button in the tool bar is briefly explained below. You can also learn the function of a button by resting the mouse pointer on the button for a few seconds. A label will pop up listing its function.



Open

Clicking this button brings up the Open dialog box, where you can specify the name of an image or recording to be opened in a new document window. The Open dialog box can also be accessed by choosing **O**pen from the **F**ile menu.



Save

Saves the active document under its current name. This function can also be accessed by choosing **S**ave from the **F**ile menu.



Cut

This button is active when you have selected text in a dialog containing a text box, when it allows you to remove the text from its current location and place it in the clipboard. This command can also be accessed by choosing **C**ut from the **E**dit menu.



Copy

This button is active when you have selected text in a dialog containing a text box. Clicking this button copies the selected text to the clipboard. This command can also be accessed by choosing **C**opy from the **E**dit menu.



Paste

Click this button to copy text from the clipboard to a text box in dialog such as Open or Save. This command can also be accessed by choosing **Paste** from the **E**dit menu.



Fit Window to Image

Enlarges the active document window to display all of the image it contains. This can also be achieved by selecting **Fit Window to Image** from the **V**iew menu.

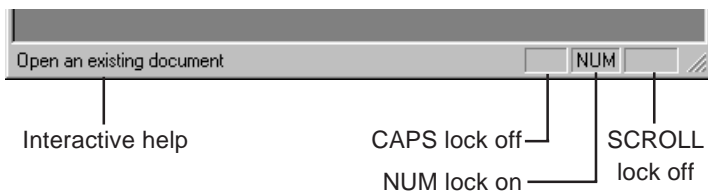


Print

Brings up the Print dialog box, allowing you to print the active document to the printer or file you specify. This command can also be accessed by choosing **Print** from the **F**ile menu.

The Status Bar

When the **Status Bar** item in the **V**iew menu is checked, a status bar appears at the bottom of the main window.



The interactive help window in the status bar displays a brief help messages about any tool button or menu command you move the mouse pointer across. At the right-hand end of the status bar are boxes which give information on whether the CAPS, NUM, and SCROLL locks are on or off.

The status bar can be hidden by selecting **Status Bar** from the **V**iew menu.

Document Windows

When a document is read from disk or acquired from the camera, it is displayed in a document window similar to that shown below. Document windows are displayed only within the main window, and cannot be moved onto the Windows desktop.



Any number of document windows may be open simultaneously, although only one of these will be active at a time; the active document may be distinguished from other documents by its title bar. Operations such as close, save, fit window to image, show information, flip, and rotation performed using the buttons in the tool palette or the menus in the main window will affect only the active document.

The title bar of the document window lists the name of the document and, in the case of images, its zoom ratio. Each document window also has a tool bar and a control menu which allows you to perform operations on the window itself, rather than on the document it contains. The commands which may be accessed from the document window control menu and tool bar are outlined below.

The Document Window Control Menu

The document window control menu may be accessed by clicking the note icon (📌) at the left-hand end of the title bar.



The items in the document window control menu are explained below.

Restore

Restores the window to its original size after it has been enlarged using the **Maximize** command.

Move

Allows you to use the arrow keys or mouse to move the document window anywhere within the main window. When you have moved the window to the desired position, click the right mouse button or press **Enter**.

Size

Allows you use the arrow keys or mouse to change the size of the document window. The document window cannot be made larger than the current size of the main window.

Minimize

Reduces the document window to an icon at the bottom of the main window.

Maximize

Enlarges the document window to fill the main window.

Close

Closes the document window.

Next

Activates the next open window and brings it to the front.

The Document Window Tool Bar

The commands accessible from the document window tool bar are outlined below. You can also learn the function of a button by resting the mouse pointer on the button for a few seconds. A label will pop up listing its function.



Show Information Brings up the Information dialog box for the document, giving its size, location, and date of recording. The Information dialog can also be accessed by selecting **Show Information** from the **View** menu.



Play Sound If the document contains a sound recording, clicking this button will bring up the Play Sound dialog, allowing you to play the recording back or to save it to disk. This function can also be accessed by selecting **Play Sound** from the **View** menu.



Flip Horizontal Flips the image in the document window horizontally. This command can also be accessed by clicking the Flip Horizontal button in the main window tool bar or by choosing **Horizontal** from the **Flip** submenu of the **Tools** menu.



Flip Vertical Flips the image in the document window vertically. This command can also be accessed by clicking the Flip Vertical button in the main window tool bar or by choosing **Vertical** from the **Flip** submenu of the **Tools** menu.



Rotate 90° Counterclockwise

Rotates the image in the document window 90° to the left. This command can also be accessed by clicking the Rotate 90° Counterclockwise button in the main window tool bar or by choosing **90° CCW** from the **Rotate** submenu of the **Tools** menu.



Rotate 90° Clockwise

Rotates the image in the document window 90° to the right. This command can also be accessed by clicking the Rotate 90° Clockwise button in the main window tool bar or by choosing **90° CW** from the **Rotate** submenu of the **Tools** menu.

The Browser Window


The browser window acts as the link between your COOLPIX 300 and *Nikon View*, or between your camera and other applications which support TWAIN acquire plug-ins. From the browser window, you can preview documents stored in your camera's memory, transfer them to *Nikon View* for playback and editing, save them directly to disk without alteration, and delete images and recordings from the camera's memory. Images in the browser window can be viewed flipped or rotated using the buttons on the main tool palette. The browser window can also be used to control your camera, allowing you to take photographs or make recordings while the camera is connected to the computer.

The browser's functions are divided between the browser window tool palette and the preview window. The preview window is used to view the contents of the camera's memory, the browser tool palette to control the camera and acquire, save, and delete documents.



The commands available in the browser window are outlined below. For more information on using the browser, see *“Using the Browser.”*

The Browser Window Control Menu

The browser window's control menu can be accessed by clicking the icon  at the left end of the title bar.



The browser window control menu contains the items listed below.

Restore

Restores the window to its original size after it has been enlarged using the **Maximize** command.

Move

Allows you use the arrow keys or mouse to change the position of the browser window. When you have moved the window to the desired position, click the right mouse button or press **Enter**.

Size

Allows you use the arrow keys or mouse to change the size of the browser window.

Minimize

Reduces the browser window to an icon.

Maximize

Enlarges the browser window to fill the screen.

Close

Closes the browser window, returning you to the main application.

Next

Activates the next open document window and brings it to the front.

When the browser is being controlled by an application other than *Nikon View*, the command **About Nikon View** is shown at the bottom of the control menu. See “*The About Window*,” below.

The Browser Window Tool Palette

The function of each of the buttons in the browser window tool palette is given briefly below. You can also learn the function of a button by resting the mouse pointer on the button for a few seconds, which will cause a label to pop up identifying it by function. More detailed information on the browser window tool palette may be found in “*Using the Browser.*”



Shutter

Triggers the camera’s shutter, taking a photograph at the camera’s current settings. For more information on changing the camera’s settings before you take a photograph, see “*Using the Browser.*”



Acquire

This button is available when one or more documents have been selected in the preview window. The selected documents are opened in the calling application, where they may be edited or saved to disk in a new format.



Delete

This button is available when one or more documents have been selected in the preview window. Clicking the button (or selecting **Delete** from the **Edit** menu in *Nikon View*) brings up the Delete Items dialog, allowing you to permanently remove the selected items from the camera’s memory.



Save

When one or more items have been selected in the preview window, clicking this button saves the selected items under their current names exactly as they are stored in the camera’s memory. Any changes made to the documents in the browser or main window will not be saved.



Show Thumbnails Causes a thumbnail preview of each item in the camera's memory to be displayed in the preview window.



Hide Thumbnails Displays the contents of the camera's memory as a simple list, without thumbnails.



Sort by Time Orders the items in the preview window by date.



Sort by Name Orders the items in the preview window by name.



Ascending Sorts the items in the preview window in ascending order by name or date.



Descending Sorts the items in the preview window in descending order by name or date.



Battery Level Shows the camera's current battery level.

The browser window tool palette also lists the total number of documents stored in the camera's memory and the number of documents currently selected.







The Preview Window

Each document listed in the browser's preview window has three buttons, which can be used to determine whether the document contains a recording or a memo, get information about the document, to play back sound recordings, and to control how memos are displayed.



The functions of these buttons are briefly described in the following list. You can also learn the function of a button by resting the mouse pointer on the button for a few seconds. A label will pop up giving its function.

- | | | |
|---|-------------------------|---|
|  | Show Information | Brings up the Information dialog box for the document, giving its name, size, and date of recording. |
|  | Play Sound | This button will be active only if the document contains a sound recording. If the document contains a sound recording, clicking this button will cause the recording to be played back from either the camera's built-in speaker or your computer's sound system. |
|  | Toggle Memo | This button will only be active if the document contains a memo. If the button contains a pencil icon, the memo will be overlaid on the photograph when the document is acquired or previewed. Clicking the Toggle Memo button causes the icon to change to a document icon (). If this icon is displayed, the memo will not be included when the document is acquired or played back. |

You can also access any of the above three functions by selecting the corresponding command from the **View** menu.

Using the Browser

The browser is your link between the COOLPIX 300 and your computer. When the camera and computer are connected, the browser allows you to use the camera much as you would when operating the camera independently. It also makes possible the transfer information from the COOLPIX 300 to your computer, using Nikon View or any other application which supports TWAIN-compliant acquire plug-ins. This chapter details how you can use the browser to perform the following tasks:

- take photographs while the camera is connected to the computer
- preview the contents of the camera's memory
- acquire documents from the camera for editing in *Nikon View* or other applications
- save the contents of the camera's memory to disk
- delete documents from the camera's memory

Also included in this chapter are how to change the camera's settings from within the browser and how to set the browser's preferences. Information on using Nikon View to edit acquired documents, read files from disk, and save documents under new names or in different formats is given in the following chapter.

Note: *When the camera is being controlled by the browser, the camera can only be operated via the browser's Preferences dialog and the Shutter button in the browser window tool palette (for more information, see "Preferences" and "Taking Photographs," below). The camera's touch-panel controls and record and shutter-release buttons will be deactivated.*

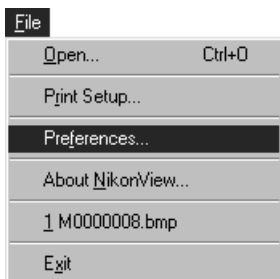
Preferences

Nikon View's Preferences dialog box allows you to control a number of settings that affect how the program communicates with your camera. By changing the preferences, you can control:

- your camera's flash, image quality, speaker, and recording settings;
- whether documents acquired from your camera remain in the camera's memory after acquisition;
- whether the browser window remains open after documents are acquired;
- whether sound recordings are played back using the camera or your computer's sound system;
- how annotated photographs will be displayed; and
- where to store temporary files created by the browser.

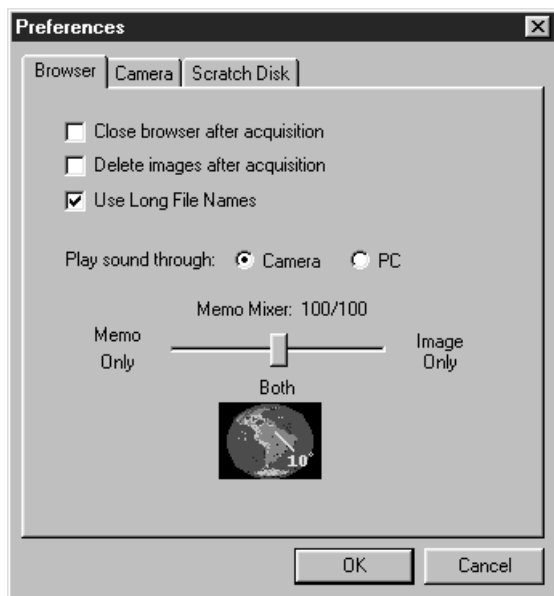
Changes made to *Nikon View*'s preferences are saved automatically for use in your next session.

To open the Preferences dialog box, choose **Preferences...** from the **File** menu or click the Preferences button in the main tool palette.



Preferences

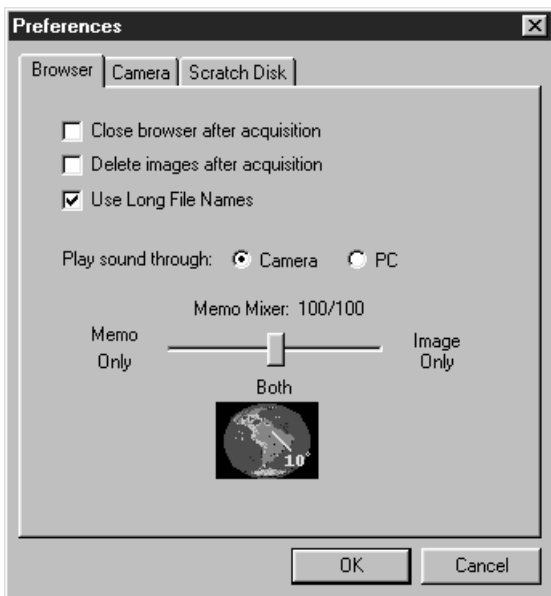
The Preferences dialog box will appear.



The Preferences dialog has three tabs which allow you to change the settings for the browser, camera, and scratch disk. Each of these tabs is taken up in turn below. When you have finished adjusting the settings, click **OK** to put the changes into effect and return to the main window or **Cancel** to discard any changes.

The Browser Tab

The browser tab in the Preferences dialog box allows you to control how the browser behaves when an image is acquired and how memos and sound recordings will be previewed in the browser window.



The options available in the browser tab are listed below.

Close browser after acquisition

When this box is checked, the browser window will close automatically whenever documents are acquired from the browser and opened in the main window. If this item is not checked, the browser window will remain open until you quit Nikon View or until you click the browser's close box (some applications will close the browser automatically after an image has been acquired).

Delete images after acquisition

When this box is checked, documents will be deleted from the camera's memory when they are acquired from the browser and opened in the main window. If this item is not checked, documents acquired from the browser will remain in the camera's memory until you erase them using the camera's delete function or the Delete button in the browser window.

Use Long File Names

When this box is checked, documents saved using the browser's Save button can be stored using prefixes that conform to the long file name format used by Windows 95. When the box is not checked, prefixes must conform to DOS filename conventions.

Play sound through Camera or PC

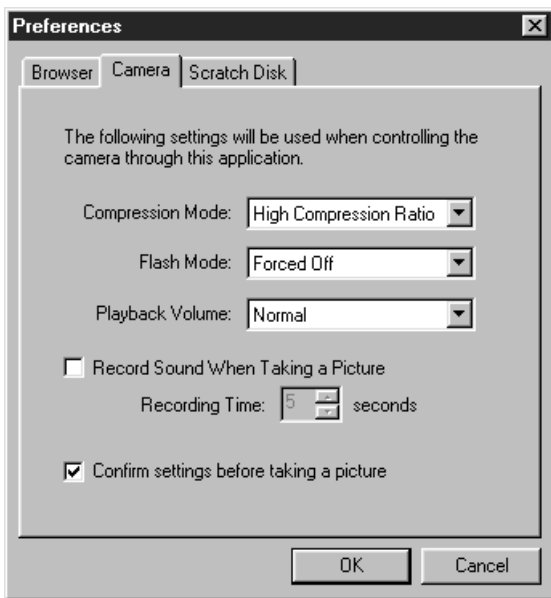
These radio buttons allow you to choose whether sound recordings will be played back using the camera's speaker or the computer's sound system, if any. Choose **Camera** if your computer does not have a sound card.

Memo Mixer

This slider bar controls how annotated photographs will be displayed. When the slider is set to the middle, memos will be displayed directly on the photograph. Moving the slider to the right increases the transparency of the memo until only the photograph will be visible; moving the slider to the left gradually increases the transparency of the photograph until only the memo is visible. You can gauge the effects of the new setting by observing the sample image displayed under the slider.

The Camera Tab

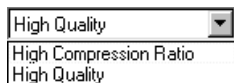
The camera tab in the Preferences dialog box allows you to change the COOLPIX 300's settings while the camera is being controlled from the browser.



The camera tab gives you control over the following camera settings:

Compression Mode (Image Quality)

Clicking on the arrow to the right of this item reveals the pop-up menu shown at right, offering the following choice of image quality settings.

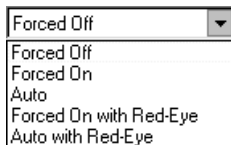


High Compression Ratio: Corresponds to an image-quality setting of Normal, producing photographs which require relatively little memory to store.

High Quality: Corresponds to an image-quality setting of Fine, producing higher-quality images that require twice as much memory to store as photographs recorded at High Compression Ratio.

Flash Mode

This item is associated with the pop-up menu shown at right. From this menu, you can choose one of the flash settings listed below.



Forced Off: Prevents the flash from firing even when lighting is inadequate. Choose this setting when the camera is being powered by the AC adaptor.

Forced On: Causes the flash to fire whenever the shutter is released.

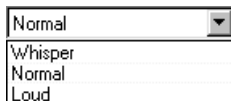
Auto: Sets the flash to fire whenever lighting is inadequate.

Forced On with Red Eye: The same as **Forced On**, except that the red-eye reduction pre-flash will fire before the main flash to minimize the so-called “red-eye effect.”

Auto with Red Eye: The same as **Auto** but with red-eye reduction.

Playback Volume (Speaker Volume)

The pop-up menu associated with this item controls the level of the camera’s built-in speaker (this item has no effect on the volume of your computer’s speakers).



Whisper: Corresponds to a Speaker Volume setting of 1 (low volume).

Normal: Corresponds to a Speaker Volume setting of 2.

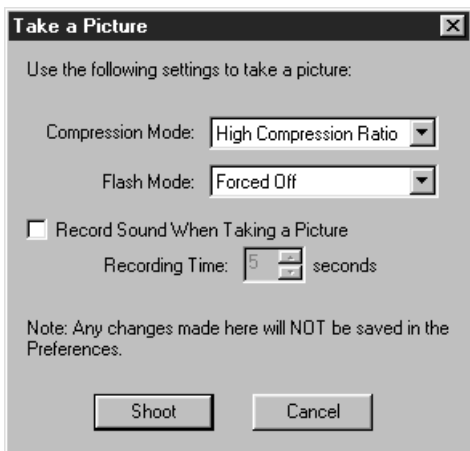
Loud: Corresponds to a Speaker Volume setting of 3 (maximum volume).

Record Sound When Taking a Picture (Recording Mode 1)

When this box is checked, the camera’s recording mode will be set to Mode 1, causing a sound recording of fixed duration to be made whenever the shutter is released. The resulting recording will be stored in the same document as the photograph. The length of the recording that will be made when the shutter is released can be set by adjusting the **Recording Time** (you can either enter a value directly in the box to the right of the **Recording Time** item or use the arrows to set the value). Recording time is measured in seconds; any value between one and thirty is acceptable.

Confirm settings before taking a picture

When this item is checked, clicking the Shutter button in the browser tool palette will cause the following dialog to be displayed, allowing you to change the camera's Image Quality, Flash, and Sound Mode settings before taking a photograph.

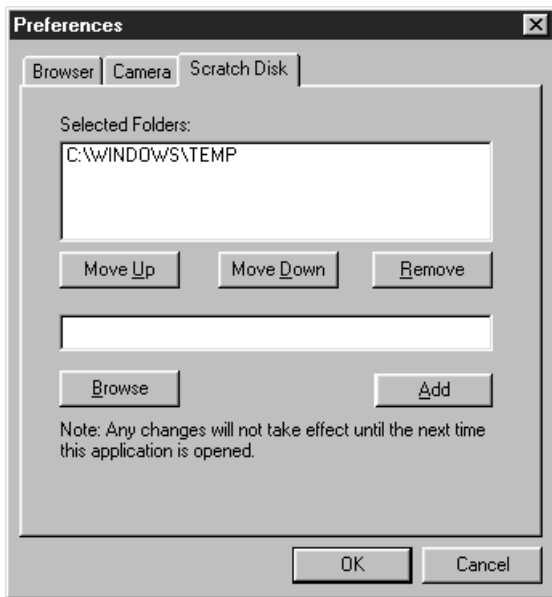


If this item is not checked, the above dialog will not be displayed when the Shutter button is clicked. Instead, a photograph will be taken using the settings specified in the Preferences dialog box.

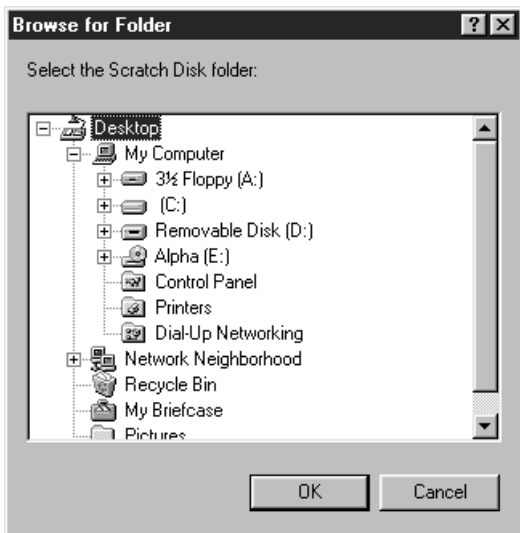
For more information on camera settings, refer to the COOLPIX 300 User's Manual.

The Scratch Disk Tab

The scratch disk tab in the Preferences dialog box gives you control over where the browser stores temporary files created when documents are previewed or acquired. The scratch disk tab is shown below.



The default directory for temporary files is the temporary directory specified by Windows. You can choose a directory to be added to the list of **Selected Disks** by typing its name in the text box at the bottom of the window, or you can click the **Browse** button to navigate to the desired directory.

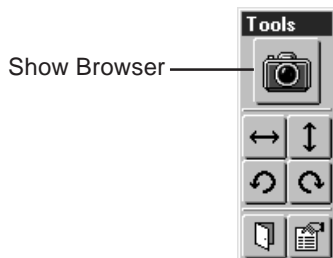


Clicking the **Browse** button brings up the dialog shown above, where you can navigate through the drives and directories by clicking on the plus (+) signs. Once you have located the desired directory, select it and click **OK**. The directory's name and path will appear in the text box in the scratch disk tab.

Once you have chosen a directory, clicking **Add** will add it to the list of **Selected Disks**. You can change the order in which the selected directories will be accessed by selecting a directory in the list and clicking **Move Up** to move it ahead one place in the list or **Move Down** to move it back one place. Clicking **Remove** will remove the selected directory from the list of scratch disks. Before any changes can be put into effect, you will need to exit the Preferences dialog by clicking **OK** and then restart the current application.

Opening the Browser Window

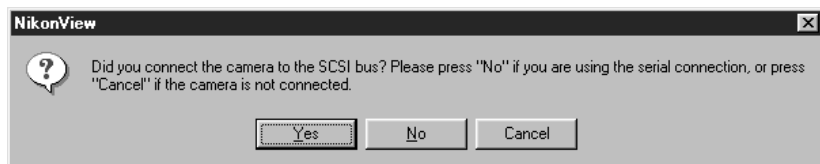
If the camera is connected to the computer when the application starts up, the browser will open automatically whenever you start *Nikon View* (if you are using another application, the browser will not be shown at start-up but must be launched from the application's acquire menu). If you have since closed the browser by clicking its close box, you can re-open it by selecting **Show Browser** from the **View** menu or clicking the Show Browser button in the main window tool palette.



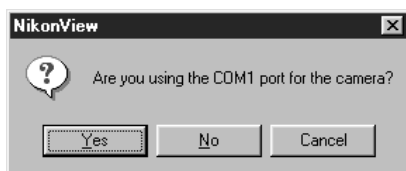
If the camera is connected to the port to which it was attached the last time you used the browser, the browser window will be displayed inside the application window.



If you have since attached the camera to a different port, the following message will be displayed when the program attempts to open the browser.



If you have connected your camera to the computer's SCSI chain, click **Yes**. Clicking **No** will bring up the message shown below.



If you have connected your camera to COM port 1 or if you are not sure to which serial port your camera is connected, click **Yes**. If you have connected your camera to a different COM port, click **No**. If you click **No** or if the computer does not find the camera on COM port 1, you will be asked whether the camera is connected to COM port 2. This procedure will be repeated until the COM port to which the camera is connected is found.

Note: Depending on your computer, the serial ports may be identified as "SERIAL1, SERIAL2..." rather than "COM1, COM2...." The difference is one of name only; even if the port to which your camera is connected is SERIAL1, you should choose COM1 when so prompted by the computer.

If *Nikon View* is unable to locate the camera, either because the camera and computer are not properly connected, the camera is off, or you failed to choose the correct port when prompted, the following message will be displayed.



After clicking **OK**, check to see that the camera and computer are properly connected and that the camera is on. If the camera is off or improperly connected, before you will be able to open the browser you will need to quit the application, end your Windows session, turn off the computer, and reconnect the camera and computer as described in the *COOLPIX 300 User's Manual*. If you chose the wrong port when prompted, you can click the Show Browser button again and choose the correct port. The browser will then open normally.

Note: *In addition to Nikon View, the browser can be launched from any application which supports TWAIN acquire plug-ins (the browser will appear in the application's menu of TWAIN sources as "NikonView Browser"). When the browser is launched from another application, the browser window and the main tool palette will appear on the desktop. For information on selecting and launching TWAIN drivers from within another application, consult the program's documentation.*

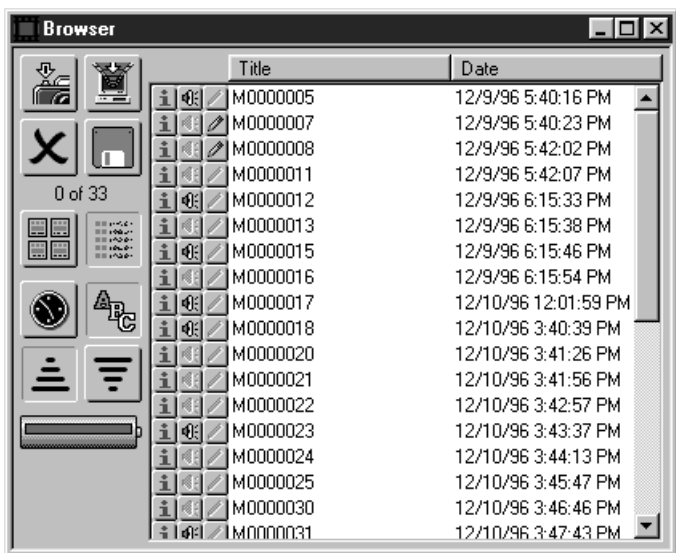
Previewing Documents

Once you have opened the browser window, you are ready to preview the contents of the camera's memory.

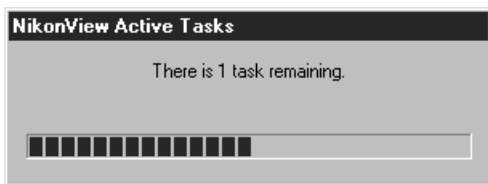





The browser can be set to show the contents of memory either as thumbnail previews (shown above) or as a list giving the filename and date of recording for each item in memory. When the browser is set to show previews, memos and photographs in the preview window appear as thumbnail images, while documents containing only a sound recording are indicated by a square with an "X" through it (depending on what settings were chosen for **Memo Mixer** in the Preferences dialog, memos or photographs may not be displayed).



To speed processing or to view information on the document's date of recording, a list-style display can be chosen by clicking the Hide Thumbnails button in the browser tool palette. The list-style display is shown below.




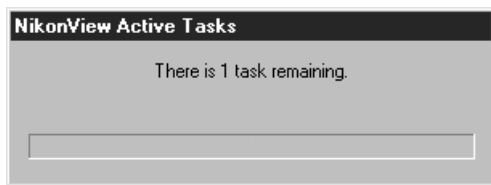
To view the documents as thumbnail previews once more, click the Show Thumbnails button. The following progress indicator will be displayed while the browser reads the contents of the camera's memory and creates previews.




Each document in the preview list occurs with Information, Play Sound, and Toggle Memo buttons (  ). If the document does not contain a sound recording, the Play Sound button will be dimmed and inactive. Similarly, if the document does not contain a memo, the Toggle Memo button will be dimmed.

When a document includes a memo, clicking the Toggle Memo button () will hide the memo's thumbnail preview, giving you a clearer view of any photographs that may be underneath and preventing the memo from being transferred to the main window when the document is acquired. When a memo is present but hidden, the Toggle Memo button shows a document icon (). Clicking the button a second time will reveal the memo once more.

To preview a sound recording, click the Play Sound button () associated with the document in question. A progress indicator will appear while the recording is loaded into memory.



If **Play sound through Camera** has been selected in the Preferences dialog, the recording will be played back over the camera's speaker. If the selected playback mode is **Play sound through PC**, the Play Sound dialog will appear, allowing you to play back selected portions of the recording or to save the entire recording to disk (see *“Playing Back Sound Recordings”* in *“Working with Documents,”* below).

Clicking a document's Show Information button () will bring up the Information dialog for the document in question.



The Information dialog lists the title, date and time of recording, and total memory occupied by the document in question. Click **OK** to close the dialog and return to the browser window.

Memos and photographs in the preview window can be flipped and rotated using the buttons in the tool palette (for more information on using the tool palette, see “*Working with Documents*,” below). To select a document to be rotated or flipped, click the image in the preview window. Multiple documents can be selected by holding down the **Ctrl** key while clicking each of the desired documents in turn. Any changes to the document will be preserved when the document is acquired to *Nikon View* or another application, but the changes will not be saved until you have transferred the document to your computer and saved it as described in the following chapter, “*Working with Documents*.”

Documents in the browser window can be sorted in ascending or descending order either by date of recording or by name. To list in order previews by name, click the Sort by Name button in the browser tool palette. Clicking the Ascending button will then cause the previews to be listed in alphabetical order, while clicking Descending will list the previews in reverse alphabetical order. To list previews in order by date, click the Sort by Time button. Clicking Ascending will then list the most recently created documents last, while clicking Descending will list the most recently created documents first.



Taking Photographs

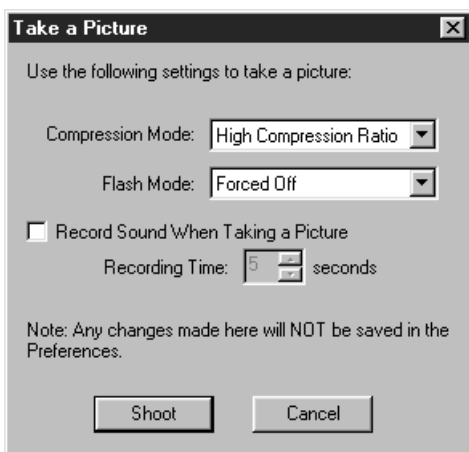
The browser window allows you to use your COOLPIX 300 to take photographs or make audio recordings even when the camera is connected to your computer. To take a photograph, ready the camera as described in the *COOLPIX 300 User's Manual*.

Note: *When making photographs or recordings from the browser, take care that the camera does not become disconnected — do not attempt to move the camera to the limit of the cable. Twisting the SCSI cable could also result in the camera becoming disconnected or even in damage to the cable itself.*

Once you have framed your photograph in the viewfinder, click the Shutter button in the browser tool palette. If the **Confirm settings before taking a picture** item has been checked in the Preferences dialog, the Take a Picture dialog will be displayed.



Shutter



Using the Take a Picture Dialog, changes can be made to the camera's Image Quality, Flash, and Recording Mode settings before a photograph is taken. The items contained in this dialog are described below.

Compression Mode (Image Quality)

Clicking on the arrow to the right of this item reveals the pop-up menu shown at right. The following settings are available:

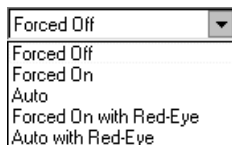


High Compression Ratio: Corresponds to an image-quality setting of Normal, producing photographs which require relatively little memory to store.

High Quality: Corresponds to an image-quality setting of Fine, producing higher-quality images that require twice as much memory to store as photographs recorded at High Compression Ratio.

Flash Mode

This item is associated with the pop-up menu shown at right. From this menu, you can choose one of the flash settings listed below.



Forced Off: Prevents the flash from firing even when lighting is inadequate. Choose this setting when the camera is being powered by the AC adaptor.

Forced On: Causes the flash to fire whenever the shutter is released.

Auto: Sets the flash to fire whenever lighting is inadequate.

Forced On with Red Eye: The same as **Forced On**, except that the red-eye reduction pre-flash will fire before the main flash to minimize the so-called "red-eye effect."

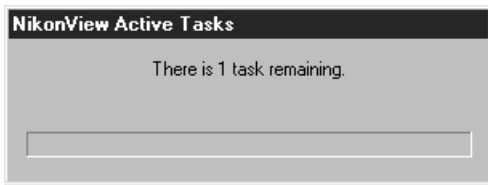
Auto with Red Eye: The same as **Auto** but with red-eye reduction.

Record Sound When Taking a Picture (Recording Mode 1)

When this box is checked, the camera's recording mode will be set to Mode 1, causing a sound recording of fixed duration to be made whenever the shutter is released. The resulting recording will be stored in the same document as the photograph. The length of the recording that will be made when the shutter is released can be set by adjusting the **Recording Time** (you can either enter a value directly in the box to the right of the **Recording Time** item or use the arrows to set the value). Recording time is measured in seconds; any value between one and thirty is acceptable.

Any changes made to the camera's settings in the Take a Picture dialog are valid only for the current photograph. The next time the Shutter button in the browser window is clicked, the settings given in the Preferences dialog will have been restored.

Once the settings have been adjusted to your satisfaction, frame a picture in the viewfinder and click the **Shoot** button to make a photograph (if the **Confirm settings before taking a picture** item in the Preferences dialog is not selected, a picture will be taken as soon as the browser Shutter button is clicked). While the camera adjusts its exposure settings and records a picture, the camera's READY lamp will blink and a progress indicator will be displayed.



If **Record Sound When Taking a Picture** has been selected, the camera's recording lamp will light up and remain on until the recording is finished.

When the camera has finished recording the photograph or combination of photograph and audio data, the resulting document will be added to the preview list under a new name.

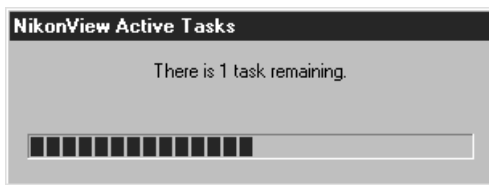
Transferring Documents to Another Application

Images previewed in the browser can be transferred to the application from which the browser was launched (if the browser was opened from within *Nikon View*, sound recordings can also be acquired). Once a document has been acquired from the browser, it can be edited or saved to disk using a new name and format (for information on using *Nikon View* to save and edit documents, see “*Working with Documents*,” below). To select a document for transfer, click its name in the preview window (multiple documents can be selected by holding down the **Ctrl** key on the keyboard while clicking each of the desired documents in turn). If the document contains a memo that you wish to acquire, be sure that the Toggle Memo shows a pencil icon (✎). If the button shows a document icon (📄), the memo will not be transferred to the main window when the document is acquired.

Once all the desired documents have been selected, clicking the Acquire button in the browser tool palette will open the documents in the application from which the browser was launched. While the documents are being copied to the main window, the following progress indicator will be displayed.



Acquire



If the **Delete images after acquisition** has been checked in the Preferences dialog box, the selected documents will be removed from the camera’s memory once they have been transferred to the browser. Otherwise the images will remain in the camera’s memory even after having been copied to the main window. If **Close browser after acquisition** has been checked, the browser window will be closed once the images have been acquired.

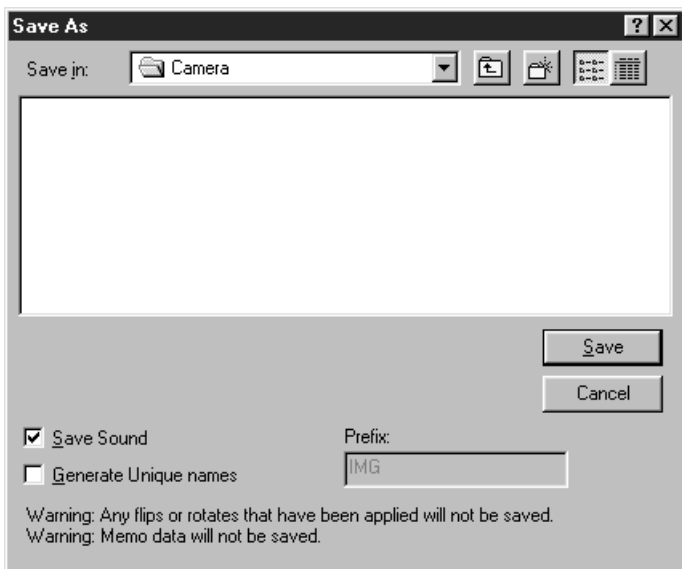
Saving Documents to Disk

The browser window's save function allows you to save documents to disk exactly as they are stored in the camera's memory. To save a document, select it from the preview window by clicking its title. Multiple documents can be selected by holding down the **Ctrl** key on the keyboard while clicking each document in turn.

Once you have selected all the documents you wish to save, click the Save button in the browser tool palette. The Save As window will appear.



Save



The options in the browser's Save As window are explained below.

Save in

Allows you to specify a destination drive and directory for the documents.



Up One Level

Moves you up one level in the directory structure.



Create New Folder

Creates a new directory under the current directory and allows you to specify a name for it.



List/Details

Toggles the display to show either a simple list of icons and file names, or a detailed list giving file name, size, type, and date saved.

Save (Open)

Saves the selected documents in the current directory. If a directory is selected in the file list, this button will change to read **Open**. Clicking this button will then open the selected directory.

Cancel

Returns you to the browser window without saving the selected documents.

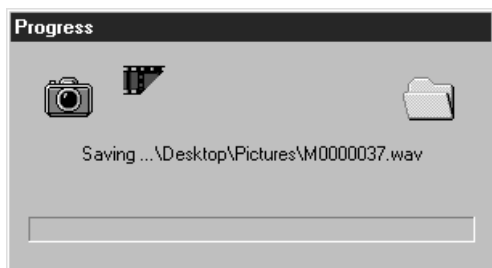
Save Sound

If this box is checked, any audio data included in the selected documents will be saved as .WAV files. If this box is not checked, audio data will not be saved.

Generate Unique Names

If this box is not checked, selected photographs will be saved under the titles used in the browser's preview window. If this box is checked, you can enter a prefix in the **Prefix** text box. If, for example, the specified prefix were "IMG," the first photograph selected would be saved as "IMG000," the second as "IMG001" and so forth. The numbers following the prefix are assigned by *Nikon View*; note that even if you have changed the prefix, numbering does not start again from zero but continues from the last number assigned.

To save the photographs you have selected, first navigate to the desired drive and folder. Then use the **Generate Unique Names** check box to specify whether you wish to save the photographs under their current titles or using a prefix of your choice. If you wish to save audio data, make sure that the **Save Sound** box is checked. Finally, click the **Save** button. A progress indicator will be displayed while the selected documents are saved to disk.



Photographs are saved in JPEG (“.JPG”) format at their current compression ratio; sound images as .WAV files. Memos cannot be saved from the browser window, but can be saved from the main window once acquired. Documents are saved exactly as they are stored in the camera; any flips or rotations performed on the document in the browser’s preview window or in a document window will not be saved.

Deleting Documents

While in the browser window, you can delete documents from the camera's memory. To select a document for deletion, click its title in the preview window. Multiple documents can be selected by holding down the **Ctrl** key on the keyboard while clicking each document in turn.

Once you have selected the documents you wish to delete, click the Delete button in the browser's tool palette. The Delete Items dialog will be displayed.



Delete



The first document selected will be previewed in the Delete Items window. You can select which elements of the document you wish to delete by checking the boxes next to **Image**, **Sound**, and **Memo**. If, for example, the document included a photograph, an audio recording, and a memo, checking only **Image** would delete only the photograph, while checking both **Image** and **Memo** would cause both the photograph and memo to be deleted. Checking all three boxes would result in the entire document being deleted, while if no boxes were checked nothing would be deleted.

Once you have selected which elements you wish to delete, click **Delete** to delete the selected elements from the document previewed in the Delete Items window. If multiple documents are selected, the next document will then be previewed in the Delete Items dialog. Click **Cancel** to halt the operation without deleting further documents. Clicking **Delete All** deletes the chosen elements from all selected documents. Note that deleted items are permanently removed from the camera's memory; be sure to save documents you want to keep before deleting them.

Working with Documents

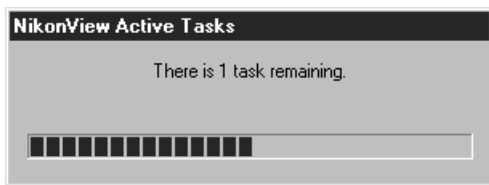
This chapter describes the operations that can be performed in *Nikon View*'s main window once you have acquired documents from the camera.

Acquiring Documents from the Camera

To acquire documents from the camera, select the desired documents in the browser's preview window. Once you have selected the documents you wish to play back or edit, click the Acquire button in the browser tool palette.



While the selected documents are being read from the camera's memory, the following progress indicator will be displayed.



Once the documents have been read from the camera, they will be opened in document windows within the main window.

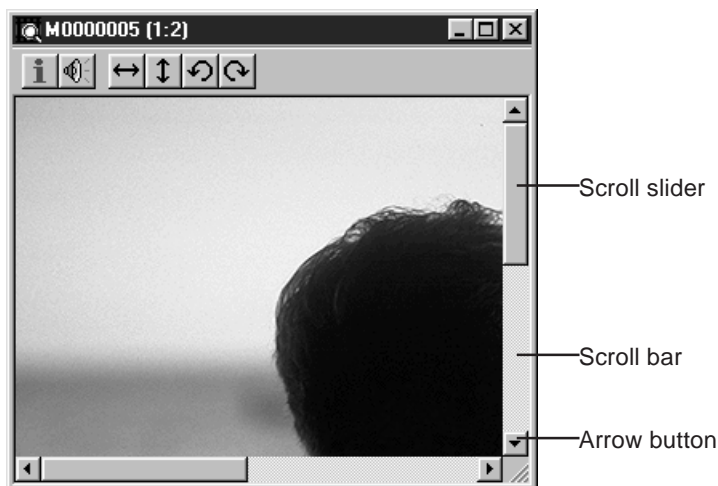


Zoom

If the acquired document contains a photograph or memo, you can zoom in on the image by placing the mouse pointer anywhere within the document window and clicking. The cursor will take the shape of a magnifying glass (🔍) while in the document window. To zoom out, hold down the **Ctrl** key on the keyboard and click anywhere in the document window. While the **Ctrl** key is held down the zoom cursor will contain a minus sign (🔍).

Scrolling and Resizing the Document Window

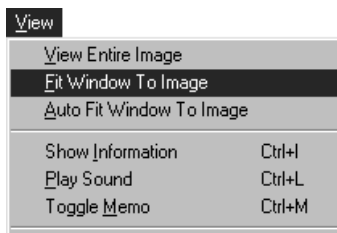
When the entire image does not fit in the document window, you can view hidden portions by dragging the scroll sliders at the right and bottom of the window, or by clicking the scroll bars or arrow buttons. Alternatively, you can enlarge the window itself dragging the window's borders.



If the main window is large enough, you can also view the entire document at its current zoom ratio by clicking the Fit Window to Image button in the main window tool bar or by selecting **Fit Window to Image** from the **View** menu.



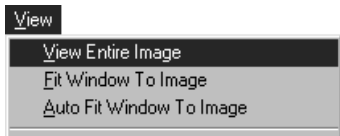
Fit Window to
Image



The document window will be either enlarged to show the entire image or, if the image is too large to fit in the main window, enlarged to fill the main window.



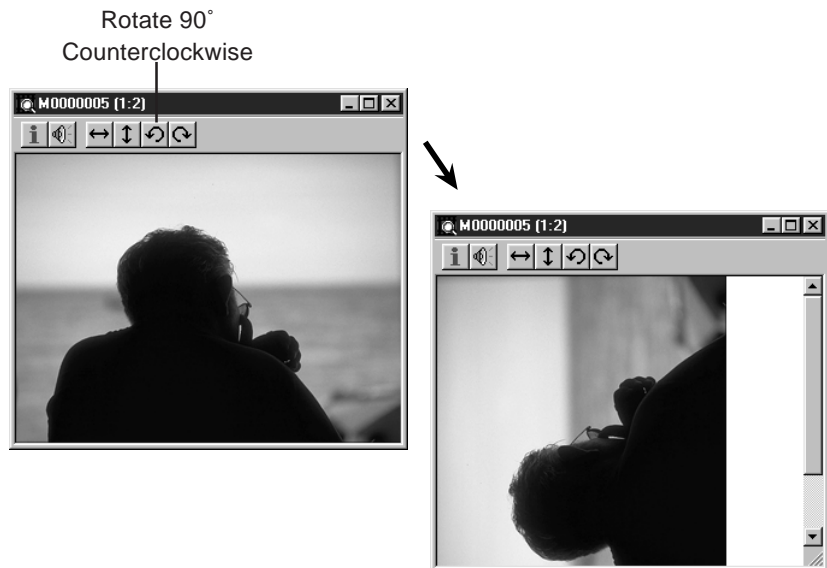
If the document is too large to fit in the main window, you can view the entire image by selecting **View Entire Image** from the **View** menu.



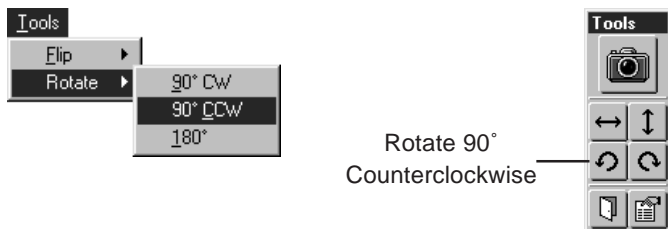
The image will be adjusted to a zoom ratio at which it will fit in the main window, and the document window will be adjusted to show the entire image.

Rotating Images

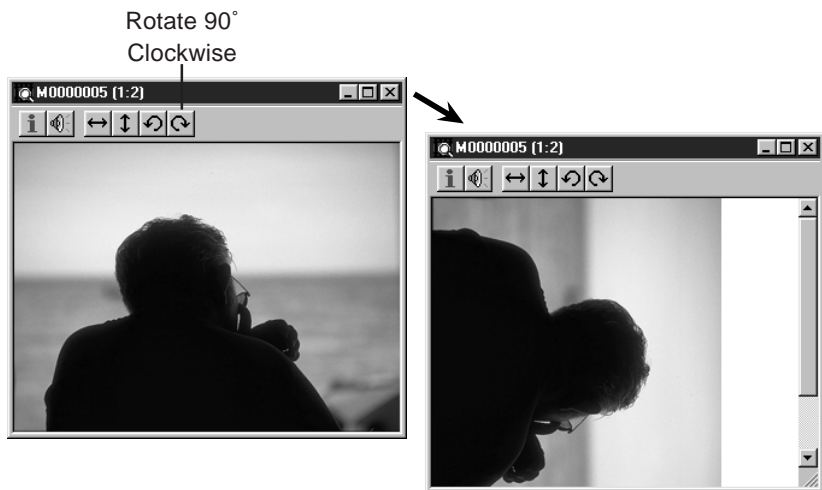
Images in a document window can be rotated ninety degrees to the left by clicking the Rotate 90° Counterclockwise button in the document window tool bar. The image will be rotated ninety degrees left each time the button is clicked.



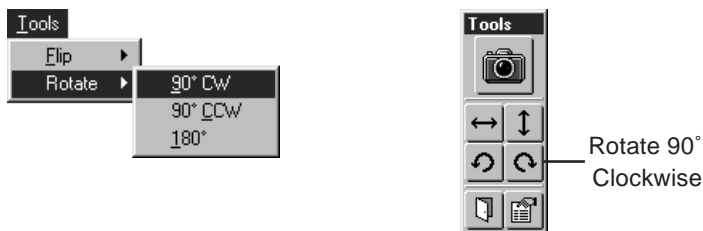
This operation can also be performed on the currently active document by clicking the Rotate 90° Counterclockwise button in the main window tool palette or by selecting **90° CCW** from the **Rotate** submenu in the **Tools** menu.



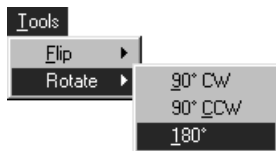
To rotate the image ninety degrees to the right, click the Rotate 90° Clockwise button in the document window tool bar. The image will be rotated ninety degrees clockwise each time the button is pressed.



You can also perform this operation on the active document by clicking the Rotate 90° Clockwise button in the main window tool palette or by selecting **90° CW** from the **Rotate** submenu in the **Tools** menu.



The active document can also be rotated 180 degrees at a time by selecting **180°** from the **Rotate** submenu.



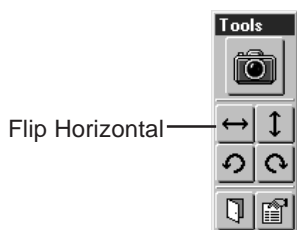
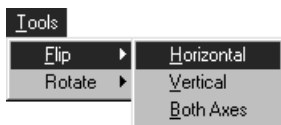
Flipping Images

Clicking the Flip Horizontal button in the tool bar of a document window flips any image it may contain horizontally.

Flip Horizontal



This operation can also be performed on the active document by clicking the Flip Horizontal button in the main window tool palette or by pulling down the **T**ools menu and selecting **H**orizontal from the **F**lip submenu.

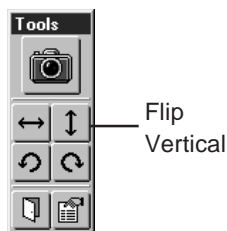
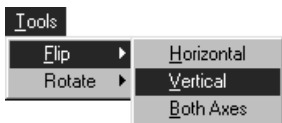


An image in a document window can be flipped vertically by clicking the Flip Vertical button in the tool bar of the document window.

Flip Vertical



You can also perform a vertical flip on the active document by clicking the Flip Vertical button in the main window tool palette or by pulling down the **Tools** menu and selecting **Vertical** from the **Flip** submenu.

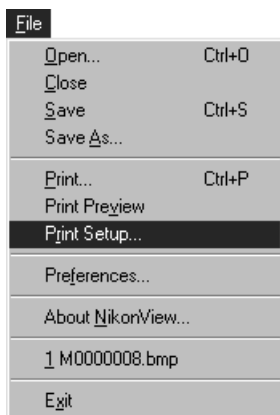


The active document can be flipped both vertically and horizontally by choosing **Both Axes** from the **Flip** submenu.

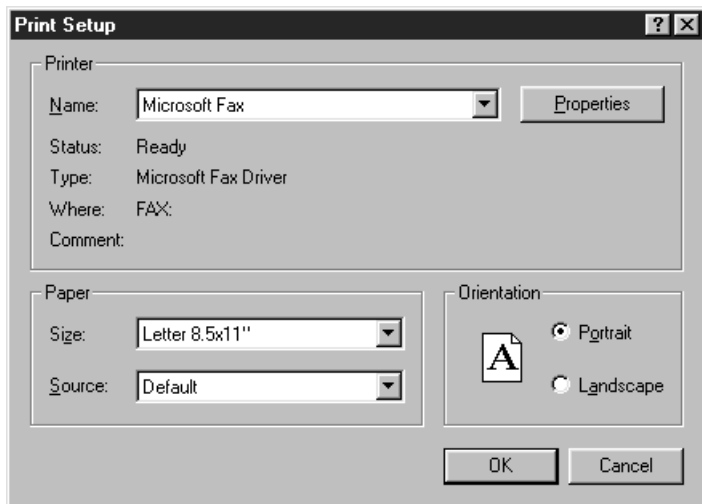


Printing Images

Images in the active document window can be printed using the commands available in the **File** menu. To choose a printer and set the page size and printing options, choose **Print Setup...** from the **File** menu.



The Print Setup window will appear.



The options in the Print Setup window are described below.

Name

Lists the name of the currently selected printer. Clicking the arrow key to the right of the listed printer will bring up a list of the printer drivers currently installed on your system, allowing you to select a different printer. The type, location, and current status of the selected printer are listed beneath this item.

Properties

Clicking this button brings up the Properties dialog for the selected printer, where you can change paper size and graphics settings. The actual contents of the Properties dialog depend on the printer selected.

Size

This item provides a list of the paper sizes supported by the selected printer. The currently selected size is displayed in the list box.

Source

This item allows you to select a paper tray (source) from among those supported by the printer. The currently selected source is displayed in the list box.

Orientation

These radio buttons allow you to choose from **Portrait** (tall) or **Landscape** (wide) settings, determining how the document will oriented when it is printed.

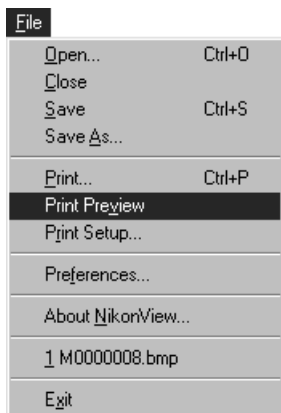
OK

Accepts the listed printer settings and returns you to the main window.

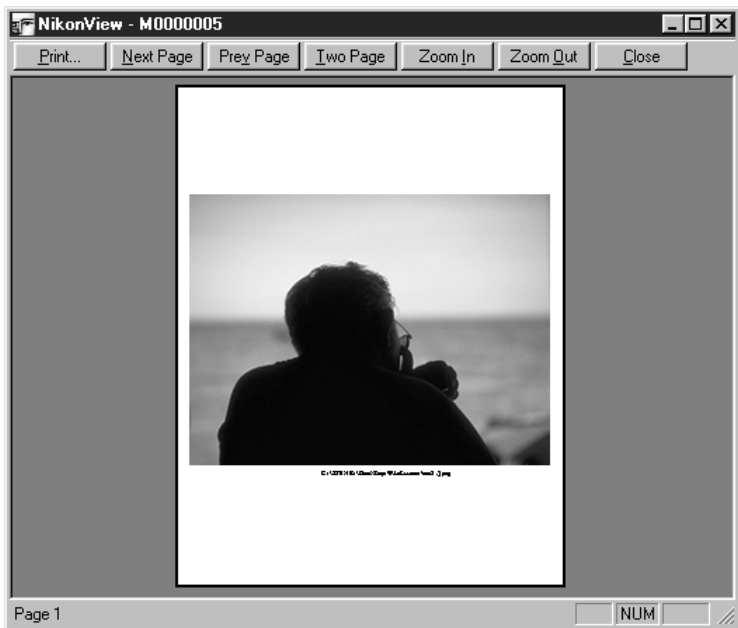
Cancel

Discards any changes to printer settings and returns you to the main window.

Once you have selected a printer, paper size, and orientation, you can see how the active document will print under these settings by choosing **Print Preview...** from the **File** menu.



A preview image showing how the active document will print will appear in the main window.



Using the buttons at the top of the preview window, you can view all pages of the document and zoom in or out on the preview. The functions of these buttons are detailed below.

Print...

Brings up the Print dialog box (see below), allowing you to print the previewed document.

Next Page

Previews the next page of a multi-page document. If the page currently displayed is the last page in the document, this button will be dimmed and inactive.


Prev Page

Previews the page immediately preceding that currently displayed. If the current page is the first page in the document, this button will be dimmed and inactive.

Two Page

Causes pages to be displayed two at a time in the preview window. If the active document fits on a single page, this button will be dimmed and inactive.

Zoom In

Zooms in on the preview image. This operation can also be performed by clicking the preview image. While the mouse pointer is over the preview, the cursor will take the shape of a magnifying glass ()

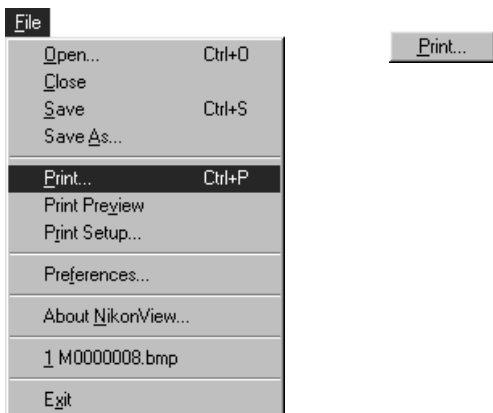
Zoom Out

Zooms the preview image out.

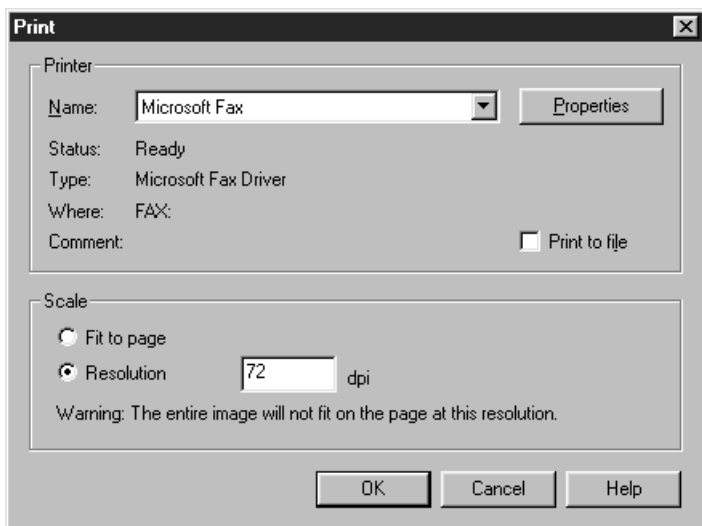
Close

Closes the preview window and returns you to the document window.

If, after viewing the print preview, you are satisfied with how the document will print, you can print the document by choosing **Print...** from either the **File** menu or the print preview window.



The Print dialog will appear.



The options available in the Print dialog are explained below.

Name

Lists the name of the currently selected printer. Clicking the arrow key to the right of the listed printer will bring up a list of the printer drivers currently installed on your system, allowing you to select a different printer. The type, location, and current status of the selected printer are listed beneath this item.

Properties

Clicking this button brings up the Properties dialog for the selected printer, where you can change paper size and graphics settings. The actual contents of the Properties dialog depend on the printer selected.

Print to file

If you click **OK** in the Print dialog when this box is checked, the document will not be printed to the specified printer but will instead be printed to a file using the current printer settings.

Fit to page

When this radio button is selected, the document will be scaled to the largest size that will fit on the page.

Resolution

When this radio button is selected, you will be able to specify the resolution at which the document will be printed. The desired resolution can be entered directly in the text box to the right of the radio button. The lower the resolution, the larger the size of the document when printed; if the document is too large to fit on the page at the current resolution, a warning will appear informing you of this fact.

OK

Prints the document at the specified settings and returns you to the main window.

Cancel

Returns you to the main window without printing the document.

Help

Brings up the Print help topic.

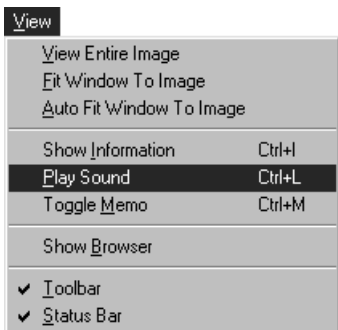
Playing Back Sound Recordings

If a document contains an audio recording, you can play it back by clicking the Play Sound button on the document window tool bar.

Play Sound



If the active document contains a recording, this function can also be accessed by selecting **Play Sound** from the **View** menu.



The Play Sound dialog will appear.



You can move to any point in the audio clip by moving the slider bar. The number underneath the slider bar gives your current position in the clip; the number at right end of the slider shows the total length of the recording. To play the recording back, click the Play button (▶). Playback can be ended by clicking the Stop button (■). Clicking the Rewind button (◀◀) returns you to the beginning of the recording, while clicking Fast Forward (▶▶) takes you to its end.

While the Play Sound dialog is open, you can save the current recording by clicking the **Save** button. This will bring up the Save As dialog (see “Saving Documents,” below), allowing you to save the recording to disk as a “.WAV” file.

When you have finished playing the recording back or saving it to disk, click the **Close** button to close the Play Sound dialog and return to the main window.

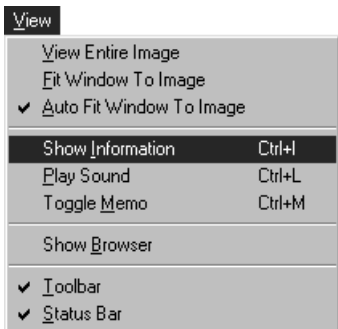
Getting Information about a Document

Clicking the Show Information button in the document window tool bar will bring up the Information window, which provides details of the document's title, size, location, and date and time of recording.

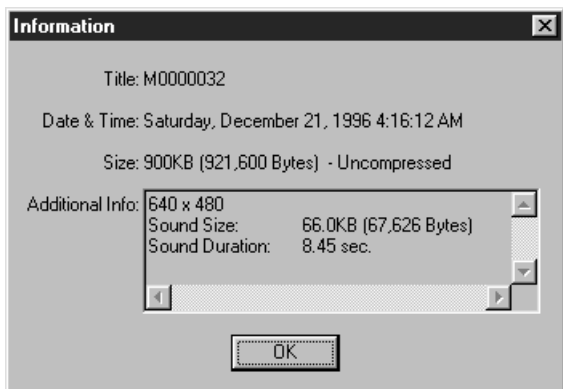
Show Information



You can also get information about the active document by selecting **Show Information** from the **View** menu.



The Information window is shown below.



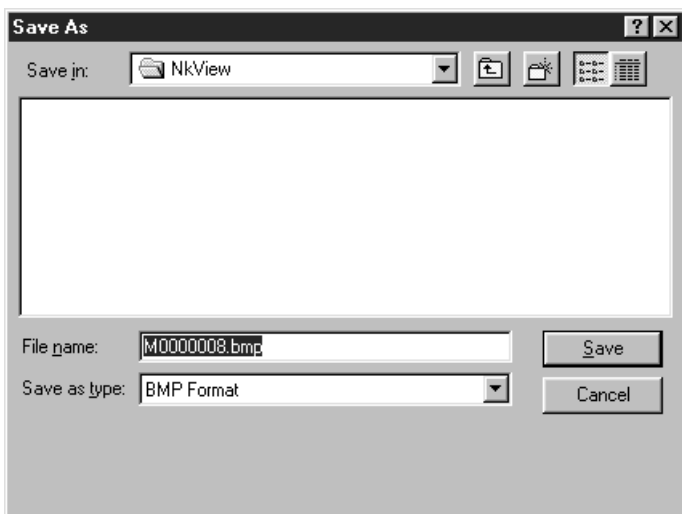
In addition to the document's title, date of recording, and the amount of space it occupies on disk or in the camera's memory, the Information window also gives the document's dimensions in pixels and the total amount of RAM or virtual memory used when the document is open.

Saving Documents

The image in the active document can be saved to disk under a specified name and file format by selecting **Save As...** from the **File** menu.



The Save As dialog will be displayed.



The options available in the Save As dialog are explained below.

Save in

Allows you to specify a destination drive and directory for the document.



Up One Level

Moves you up one level in the directory structure.



Create New Folder

Creates a new directory under the current directory and allows you to specify a name for it.



List/Details

Toggles the display to show either a simple list of icons and file names, or a detailed list giving file name, size, type, and date saved.

File name

A name of your choice can be entered in this text box.

Save as type

If the document is an image, the file type can be selected from the pop-up menu shown at right.



Images can be saved in bitmap (BMP) JPEG, or TIFF formats. Audio data will be saved as sound files in “.WAV” format.

If the selected file type is JPEG, a pop-up menu will appear at the bottom of the Save As dialog, offering a choice of image quality settings for the new file. This **JPEG Compression** menu is shown below. The choices offered range from **Excellent quality**, which produces the highest quality images but also makes the greatest demands on disk space, to **Highest compression ratio**, which produces lower-quality images requiring less disk space to store.



Save (Open)

Saves the document in the current directory and returns you to the main window. If a directory is selected in the file list, this button will change to read **Open**. Clicking this button will then open the selected directory.

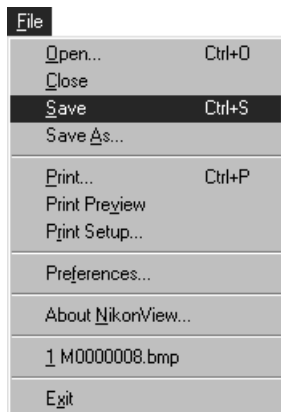
Cancel

Returns you to the main window without saving the document.

Once a document has been saved to disk, any further changes can be saved to the same file by clicking the Save button in the main window tool bar or by selecting **Save** from the **File** menu.



Save



Reading Documents from Disk

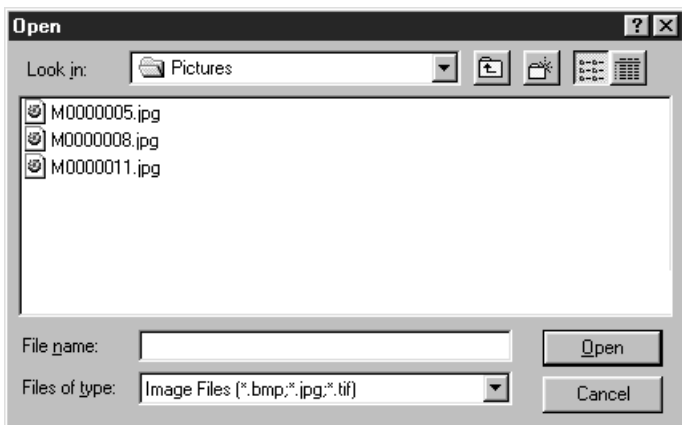
Documents previously saved to disk can be opened in the main window simply by dragging the file's icon into the main window. The document will then be opened in a new document window. You can also open documents by clicking the Open button in the main window tool bar or by selecting **Open...** from the **File** menu.



Open



The Open dialog will appear.



The items in the Open dialog are explained below.

Look in

Allows you to navigate the directory structure to locate the desired drive and directory.



Up One Level

Moves you up one level in the directory structure.



Create New Folder

Creates a new directory under the current directory and allows you to specify a name for it.



List/Details

Toggles the display to show either a simple list of icons and file names, or a detailed list giving file name, size, type, and date saved.

File name

Lists the file that will be opened when you click **Open**.

Files of type

Specifies the file types that will appear in the file list.

Open

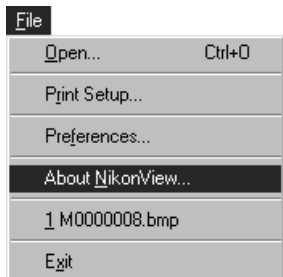
Opens the selected file and returns you to the main window. If a directory is selected in the file list, clicking this button will open the selected directory.

Cancel

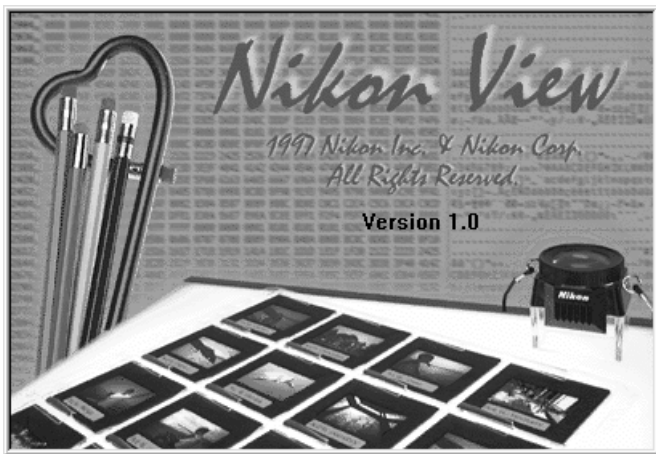
Returns you to the main window without opening any documents.

The About Window

To view the About window, which gives copyright and version information for *Nikon View*, choose **About NikonView...** from the **File** menu (if the browser is being used from another application, the **About...** command may be found at the bottom of the browser window control menu).



The About window will appear.



Click anywhere in the window to clear it from the screen.

Appendix A: *Nikon View for Windows 3.1*

This appendix lists differences between the Windows 95 and Windows 3.1 versions of *Nikon View*. But for small differences in the design of the desktop and of such standard Windows dialogs as Open, Print, and Save, the operating procedures for the Windows 95 and Windows 3.1 versions are identical. The steps involved in installing the software however differ slightly, and these differences are noted in the following section.

Installation

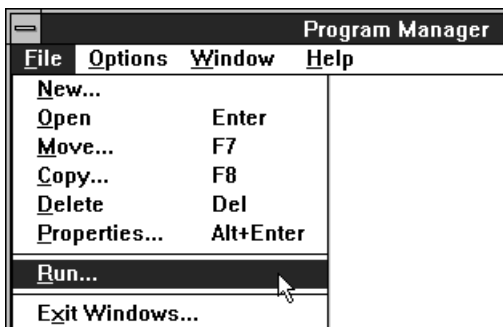
Before installing the software, check that your system meets the requirements listed in “*Before You Begin*” and that there is sufficient free disk space to complete the installation and run *Nikon View*. A minimum of 22 MBs of free disk space is required, of which 1 MB must be available on the drive to which Windows has been installed. If it has not already been installed, more disk space will be needed to install Win32s (required for running *Nikon View* under Windows 3.1). Additional space will also be required should you wish to install the software bundled with *Nikon View* on the installation CD. After starting Windows and making sure that no other applications are running, you can begin the installation procedure.

Step 1 — Ready the installation disk

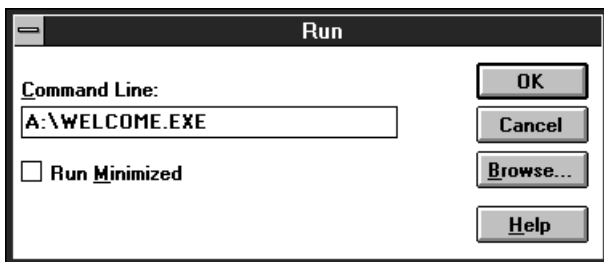
Insert the installation CD into the CD-ROM drive.

Step 2 — Launch the setup program

To start the setup procedure, choose **Run...** from the **File** menu in the Program Manager.



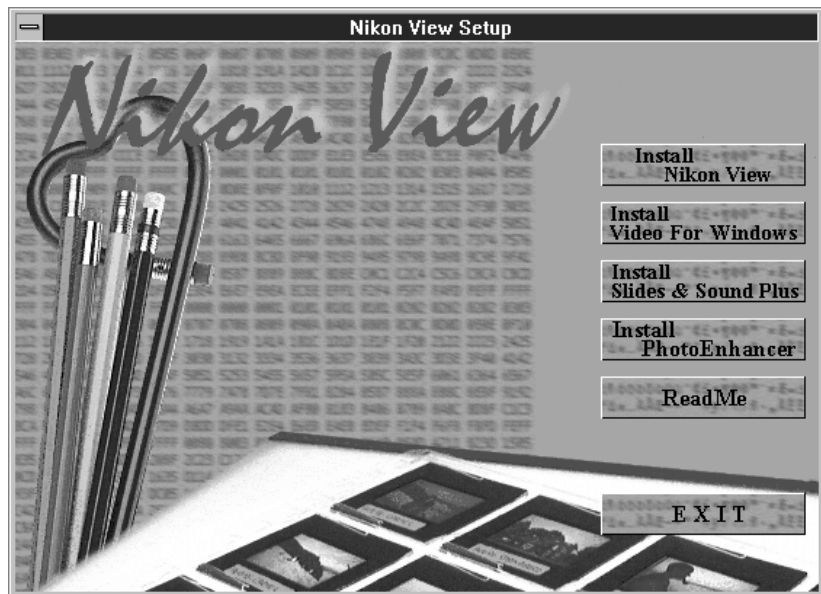
The Run dialog box will be displayed.



In the **Command Line** text box, type the drive letter of your CD-ROM drive followed by **WELCOME.EXE** (if your CD-ROM drive were drive **D:**, for example, you would type **D:WELCOME.EXE**) and click **OK**.

Step 3 — Install *Nikon View*

Launching the welcome program will cause the Nikon View Setup dialog to be displayed.



Note the addition of *Video for Windows* to the list of bundled software. If your sound card does not support the 8KHz format native to the COOLPIX 300, you can install this program to enable your computer to play back the camera's audio data.

Once the Nikon View Setup dialog has been displayed, you can continue with installation of *Nikon View* as described in "Before You Begin," starting from Step 2 and continuing through Step 5.

Step 4 — Install additional software

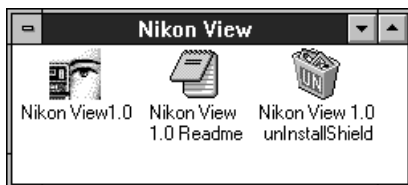
Nikon View is a 32-bit application which requires Win32s to run under Windows 3.1. If Win32s has not already been installed on your system, the *Nikon View* installer will install it automatically, but before you will be able to use the 32-bit drivers you will need to restart Windows. If Win32s has been installed by the *Nikon View* setup program, the following message will be displayed when installation is complete.



If you wish to install additional programs from the installer CD, select **No, I will restart my computer later** and click **OK** to return to the Nikon View Setup dialog. After making any additional installations, restart Windows by selecting **Exit Windows...** from the **File** menu in the Program Manager and then typing “win” at the system prompt.

If you do not want to install any additional software at the present time, select **Yes, I want to restart Windows now** and click **OK**. You can install additional software at a later date by repeating the installation process from Step 1.

After *Nikon View* has been installed, the *Nikon View* program group will be open in the Program Manager.



Note the addition of *unInstallShield* to the program group. If you should decide that you no longer need *Nikon View*, you can run this program to remove it from your hard disk. To use *Nikon View* again after running the uninstaller program, you will have to repeat the installation procedure.

Step 5 — View the README file

It is recommended that you take a few moments to view the README file, which may contain important information that could not be included in this manual. To view the README file, double-click the README icon in the *Nikon View* program group. When you have finished reading the README file, choose **Exit** from the **File** menu to close the file and return to Windows.

Index

Symbols

- “180°” command 32, 80
- “90° CCW” command 32, 79
- “90° CW” command 32, 80

A

- About window 100
- Acquire button 19, 44, 69, 75
- “Arrange Icons” command 33
- Ascending button 45, 65
- Audio data
 - playing back 90–91
 - recording 68
 - saving to disk 91, 96
- “Auto Fit Window to Image” command 30

B

- Battery level indicator 45
- “Both Axes” command 31, 82
- Browser 1, 22–23, 47–74
 - opening 57–60
- Browser window 19, 22–23, 42–46
 - preview window in 42, 46, 61–65
 - sorting documents in 65

C

- CAPS 37
- “Cascade” command 33
- “Close All” command 33
- “Close browser after acquisition” check box 69, 51
- “Close” command
 - in browser window control menu 43
 - in document window control menu 39
 - in File menu 26
 - in main window control menu 25

- “Compression Mode” pop-up menu 52
- Control menu
 - in browser window 43
 - in document window 39
 - in main window 25
- COOLPIX 300
 - changing settings while connected to computer 52–54, 66–68
 - connecting to computer 15, 18, 58–60
- Copy button 36
- “Copy” command 28
- Cut button 36
- “Cut” command 28

D

- Delete button 44, 73
- “Delete” command 28
- “Delete images after acquisition” check box 51, 69
- Descending button 45, 65
- Document list
 - in browser preview window 61–62
 - in Window menu 33
- Document window 22–23, 38–41, 38–41, 75–82, 90–93
 - resizing 77
 - scrolling 77–78
- Documents 19
 - acquiring from camera 19, 69, 75–76
 - active 38
 - deleting 73–74
 - previewing 61–65
 - reading from disk 98–99
 - saving 20, 70–72, 94–97

E

- Edit menu 28
- Exit button 21, 35
- “Exit” command 21, 27

F

- File formats
 - BMP 1
 - JPEG 1, 72, 96
 - TIFF 1
 - WAV 1, 72
- File menu 26–27
- Fit Window to Image button 37, 77
- “Fit Window to Image” command 29, 77
- “Flash Mode” pop-up menu 53, 67
- Flip Horizontal button
 - in document window tool bar 40, 81
 - in main window tool palette 34, 81
- Flip submenu 31
- Flip Vertical button
 - in document window tool bar 40, 82
 - in main window tool palette 35, 82

G

- “Generate Unique Names” check box 71

H

- Hide Thumbnails button 45, 62
- “Horizontal” command 31, 81

I

- Images
 - flipping 65, 81–82
 - rotating 65, 79–80
- Information window 64, 92–93
- Installation 4–14
 - Windows 3.1 101–105
- Interactive help 37

M

- Main window 17, 22–23, 24–37
- “Maximize” command
 - in browser window control menu 43
 - in document window control menu 39
 - in main window control menu 25
- Memo mixer 51, 61
- “Minimize” command
 - in browser window control menu 43
 - in document window control menu 39
 - in main window control menu 25
- “Move” command
 - in browser window control menu 43
 - in document window command menu 39
 - in main window command menu 25

N

- “Next” command
 - in browser window control menu 43
 - in document window control menu 39
- NUM 37

O

- Open button 36, 98
- “Open...” command 26, 98

P

- Paste button 37
- “Paste” command 28
- Photographs, taking 66–68
- Play Sound button
 - in browser preview window 46, 63
 - in document window tool bar 40, 90
- “Play Sound” command 30, 90
- “Play sound through...” radio button 51
- Play Sound window 91
- Preferences 48–56, 61, 63, 66
 - browser tab 50–51
 - camera tab 52–54
 - scratch disk tab 55–56
- Preferences button 35
- “Preferences...” command 27, 48
- Print button 37
- “Print Preview...” command 27, 85–87
- “Print Setup...” command 27, 83–84
- “Print...” command 27, 88–89
- Program icon 16

Q

- Quitting Nikon View 21

R

- README file 5, 11, 105
- Recent files list 27
- “Record Sound When Taking a Picture” check box 53, 68
- “Restore” command
 - in browser window control menu 43
 - in document window control menu 39
 - in main window control menu 25
- Rotate 90° Clockwise button
 - in document window tool bar 41, 80
 - in main window tool palette 35, 80
- Rotate 90° Counterclockwise button
 - in document window tool bar 41, 39
 - in main window tool palette 35, 80
- Rotate submenu 32

S

- “Save As...” command 26, 94
- Save button
 - in browser window tool palette 44, 70
 - in main window tool bar 20, 36, 97
- “Save” command 20, 26, 97
- “Save Sound” check box 71
- SCROLL 37
- SCSI 3, 13–14, 18, 59
- SCSI cable 66
- Serial connection 3, 18, 59
- Show Browser button 34, 57
- “Show Browser” command 30, 57
- Show Information button
 - in browser preview window 46, 64
 - in document window tool bar 42, 92
- “Show Information” command 30, 92
- Show Thumbnails button 45, 62
- Shutter button 44, 66
- “Size” command
 - in browser window control menu 43
 - in document window control menu 39
 - in main window control menu 25
- Sort by Name button 45, 65
- Sort by Time button 45, 65
- Starting Nikon View 16–18
- Status bar 37
- “Status Bar” command 30, 37
- System requirements 3

T

- “Tile” command 33
- Toggle Memo button 46, 63, 69
- “Toggle Memo” command 30
- Tool bar
 - in document window 38, 40–41
 - in main window 36–37
- Tool palette
 - in browser window 42, 44–45
 - in main window 17, 23, 34–35
- “Toolbar” command 30, 38
- Tools menu 31–32

V

- “Vertical” command 31, 82
- “View Entire Image” command 29, 78
- View menu 29–30

W

- Window menu 33
- Windows 3.1 2, 4, 101–105

Z

- Zoom 19, 76